

0CNP4-M04000EN

Directions for the Parts Catalog.

1. This Parts Catalog shows both standard and optional parts.
2. Parts may change without prior notice.
3. The following is an example of the Parts Catalog format.

REF.	LEV.	PARTS NO.	DESCRIPTION	Q'TY						I	R
				(A)	(B)	(C)	(D)	(E)	(F)		
1	1	729595-51390	FUEL INJECTION PUMP	1	1	1	1	1			1
1-1	1	729595-51391	FUEL INJECTION PUMP	1	1	1	1	1		N	1
		(A=E00185) (B=E00200)									
3	2	26022-060162	SCREW M 6X 16	9	9	9	9	9			
3-1	2	26022-060162	SCREW M 6X 16	4	4	4	4	4		K	
		(A=E00156) (B=E00156) (C=E00156) (D=E00156) (E=E00156)									
4	2	129470-51040	CAMSHAFT	1	1	1	1	1			
5	2	122710-51050	BEARING, ROLLER	2	2	2	2	2			
6	2	129470-51060	RETAINER	1	1	1	1	1			

Remarks
(1) BOOST COMPEMSATOR TYPE. OPTIONAL PART, TO E00155,(4JH-DT, 4JH-DTZ

① Ref. No.

The Ref. No. listed may not be in accordance with the illustration Ref. No.

(Ex.) Illustration No.

List Ref No.

1

1

(Before change)

1-1

(After change)

For interchangeable symbols N, R and K, illustrations for new parts may be abbreviated.

② Lev. (Level)

Level indication

The numbers below indicate the level of relativity towards the main part.

1 ----- Main parts (Assembly parts)

2 ----- Sub component included in " 1 ".

3 ----- Sub component included in " 2 ".

Note) Parts that are not for sale are partially illustrated but not listed.

③ Interchangeability Symbol

When a part change takes place, one of the following interchangeability symbols is indicated beside the part.

Symbol	Interchangeability	Contents note
N	Old $\begin{matrix} \leftarrow \text{Yes} \\ \text{No} \rightarrow \end{matrix}$ New	New Part is interchangeable for Old Part but Old Part is not interchangeable for New Part.
Q	Old $\begin{matrix} \leftarrow \text{No} \\ \text{Yes} \rightarrow \end{matrix}$ New	New Part is not interchangeable for Old Part but Old Part is interchangeable for New Part.
R	Old $\begin{matrix} \leftarrow \text{Yes} \\ \text{Yes} \rightarrow \end{matrix}$ New	New/ Old Parts are both interchangeable.
S	Old $\begin{matrix} \leftarrow \text{No} \\ \text{No} \rightarrow \end{matrix}$ New	New/ Old Parts are both not interchangeable.
W		Part newly added.
Z		Part discontinued.
F		Not interchangeable by a single part but interchangeable together with related parts.
K		Changes only for used parts quantities.

④ Effective Machine No.

When a part changes, the effective Machine No. will be indicated in the (A)-(F) column.

Product Symbol	Product No.	Product Symbol	Product No.
C	Clutch No. Compressor No.	F	Machine No. (Agricultural Equip.)
D	Drive No.	M	Machine No.
E	Engine No.		

Note 1) A date may follow the symbol. (Ex.) 1996.01

Note 2) "XXXXX" and "ZZZZZ" are for parts that could not be predicted or for engine models that could not be identified.

Note 3) (A=E00185) is the E (Engine Serial Number) for the column (A) model (in this case 4JH-DT) after the parts design change.

⑤ Remarks

Figures or alphabets (symbols) are entered in the remarks column.

The comments (remarks) on parts that are indicated at the bottom of the illustration are the same symbols as those stated above.

SECTION	PAINTING COLOR	COLOR SPLAY										MAIN PARTS	COLOR CODE (FIGURE)		
Main body	YANMAR Red	T	0	R	-	9	0	0	0	0	0	0	4	Fender CMP	10
Main body	YANMAR White	T	0	R	-	9	0	2	5	0	0	0	2	Handle	14
Main body	YANMAR Black	T	0	R	-	9	0	2	2	0	0	0	3	Engine pully	12
Main body	YANMAR Gray	T	0	R	-	9	0	3	6	0	0	0	3	Frame CMP,engine	20

Please surely use YANMAR Genuine color splay any YANMAR agricultural machines.

Given painting color may be altered for improvement,etc. without prior notice.

Contents

Fig. No. Fig. Name

PULLEY & TENSION SEC

1. ENGINE MOUNTING
2. ENGINE PULLEY & MAIN PULLEY
3. TENSION CLUTCH

TRANSMISSION UNIT

4. TRANSMISSION CASE
5. MAIN SHAFT
6. COUNTER SHAFT
7. SPEED REDUCTION SHAFT
8. AXLE
9. CHANGE

WHEEL SECTION

10. FENDER

HANDLE SECTION

11. HANDLE COLUMN
12. HANDLE
13. HANDLE COVER
14. CONTROL LEVER

ENGINE FRAME SECTION

15. ENGINE FRAME
16. HITCH

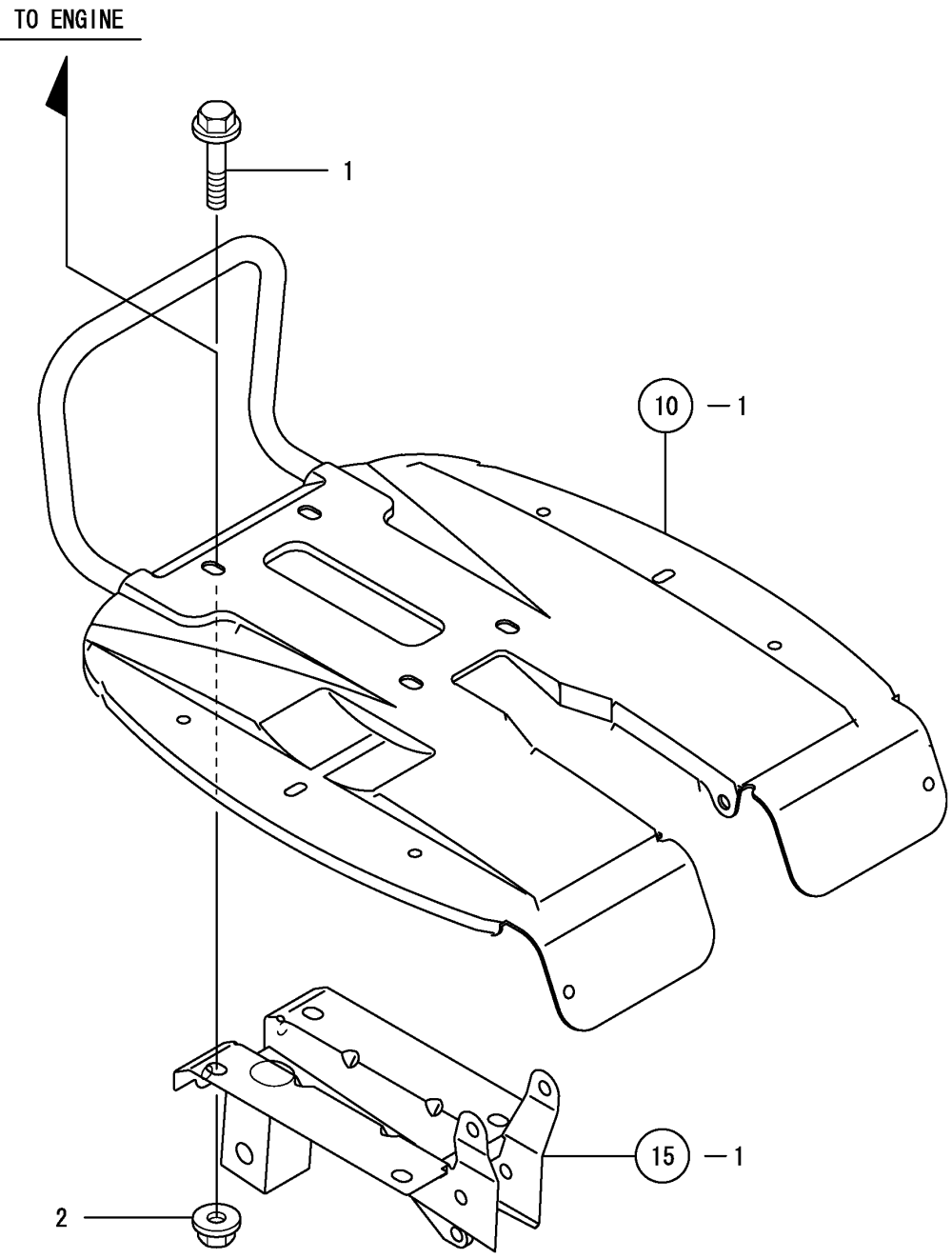
Fig. No. Fig. Name

17. BELT COVER
18. BONNET
19. SKID
20. UNIVERSAL HITCH
21. SKID
22. UNIVERSAL HITCH

LABELS & ACCESSORIES

23. ELECTRICAL PARTS
24. LABELS
25. TOOLS & ACCESSORIES
26. AXLE ROTOR

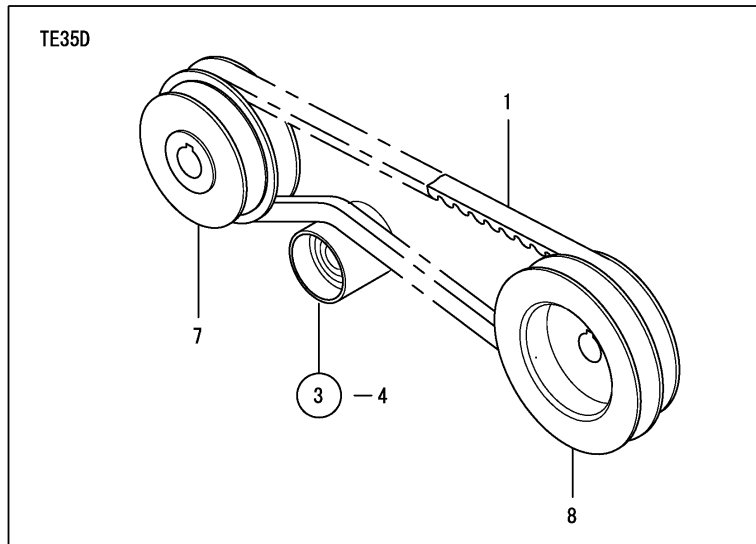
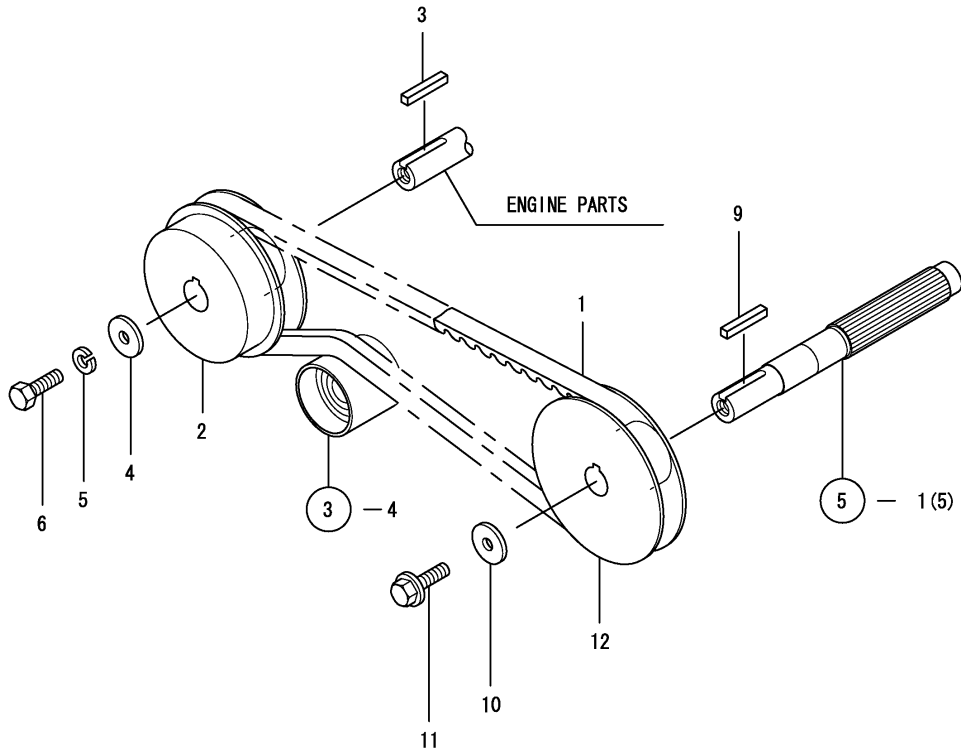
Fig.1. ENGINE MOUNTING



No.	Lev.	Parts No.	Description	Qty						I	R
				(A)	(B)	(C)	(D)	(E)	(F)		
1	1	26107-080352	BOLT M 8X 35 PLATED	4	4						
2	1	26367-080002	NUT, M8	4	4						

Blank space for additional assembly notes or specifications.

Fig.2. ENGINE PULLEY & MAIN PULLEY

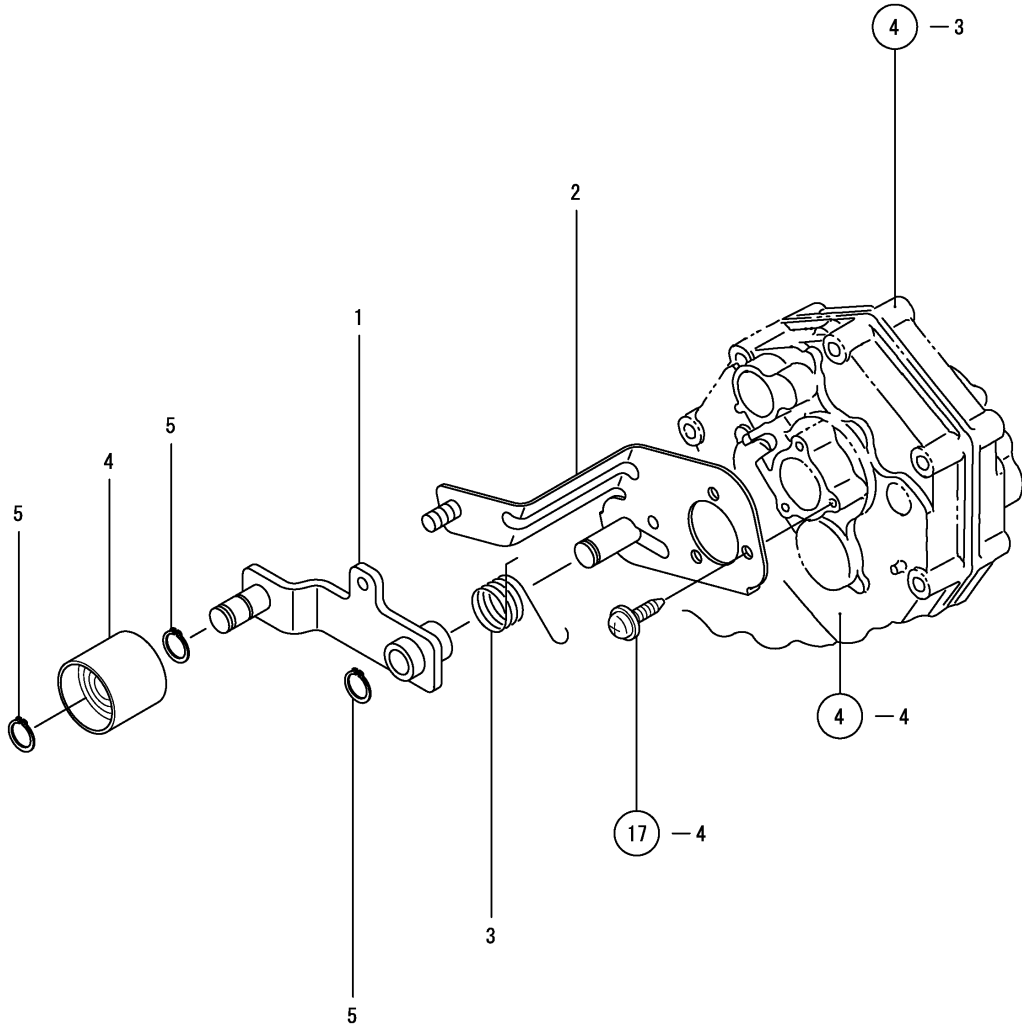


(A)=TE35
(B)=TE35D
(C)=

(D)=
(E)=
(F)=

No.	Lev.	Parts No.	Description	Q'ty						I	R
				(A)	(B)	(C)	(D)	(E)	(F)		
1	1	1A2550-12100	V-BELT A25	1	1						
2	1	1A2550-12160	V-PULLEY 74A	1							
3	1	1D1630-51050	KEY 4X25	1	1						
4	1	22157-060000	WASHER, 6	1	1						
5	1	22217-060000	WASHER, SPRING 6	1	1						
6	1	26117-060162	BOLT M 6X 16 PLATED	1	1						
7	1	1A2550-12150	V-PULLEY 65X74A		1						
8	1	1A2550-13350	V-PULLEY 80.5X90A		1						
9	1	1D1630-51050	KEY 4X25	1	1						
10	1	22157-060000	WASHER, 6	1	1						
11	1	26107-060122	BOLT M 6X 12 PLATED	1	1						
12	1	1A2550-13360	V-PULLEY 80.5A	1							

Fig.3. TENSION CLUTCH

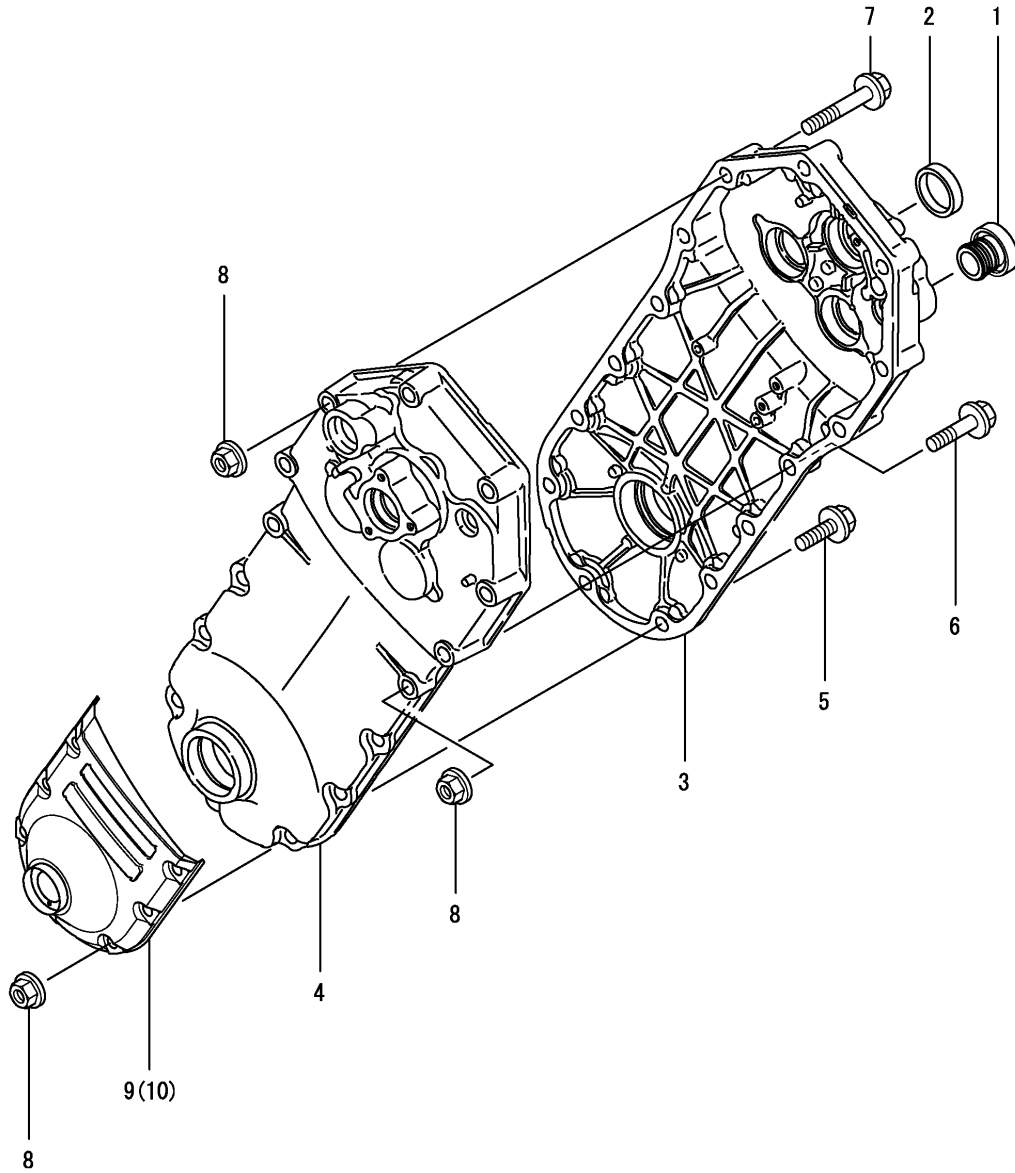


(A)=TE35
(B)=TE35D
(C)=

(D)=
(E)=
(F)=

No.	Lev.	Parts No.	Description	Q'ty						I	R
				(A)	(B)	(C)	(D)	(E)	(F)		
1	1	1A2490-13100	ARM COMPL,TENSION	1	1						
2	1	1A2490-13150		1	1						
3	1	1A2490-13400	SPRING,TENSN RETURN	1	1						
4	1	1A2550-13650	ROLLER CMP,TENSION	1	1						
5	1	22242-000120	RING, 12	3	3						

Fig.4. TRANSMISSION CASE

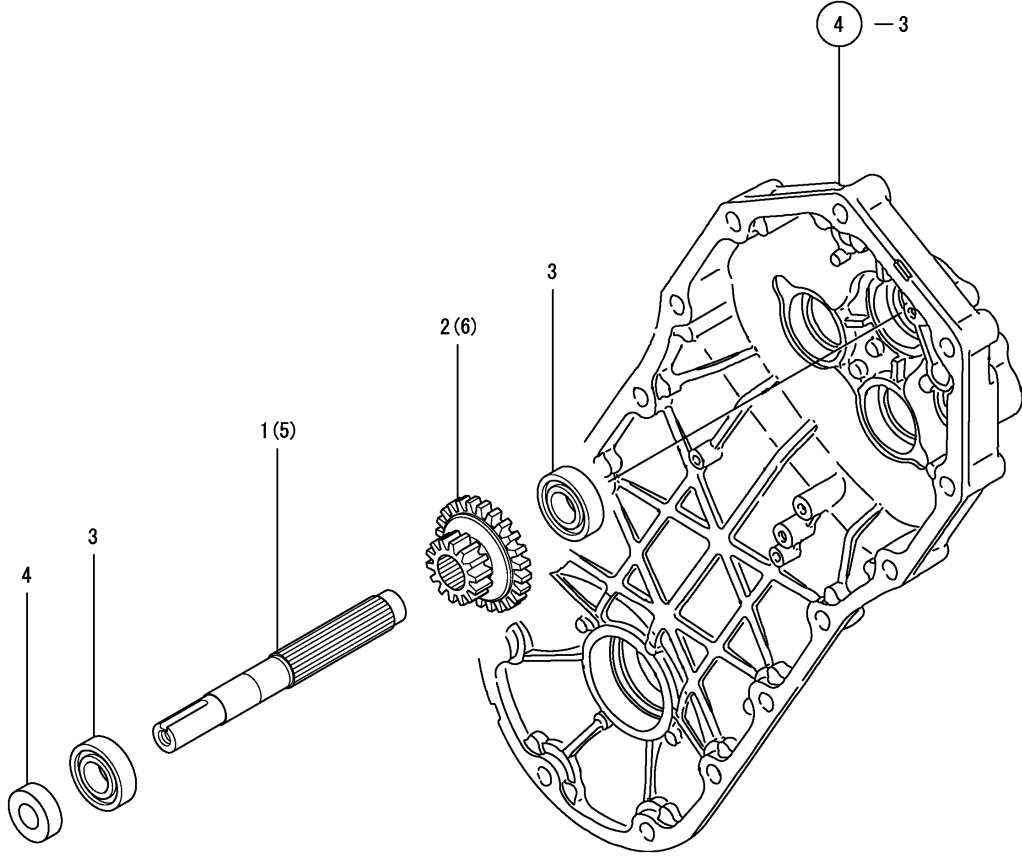


(A)=TE35
(B)=TE35D
(C)=

(D)=
(E)=
(F)=

No.	Lev.	Parts No.	Description	Q'ty						I	R
				(A)	(B)	(C)	(D)	(E)	(F)		
1	1	1A1470-20090	CAP 35,OIL FILLER	1	1						
2	1	1A1750-20410	CAP 30X5,SEAL	1	1						
3	1	1A2190-21010	CASE R,TRANSMISSION	1	1						
4	1	1A2190-21020	CASE, MISSION	1	1						
5	1	26107-080252	BOLT M 8X 25 PLATED	6	6						
6	1	26107-080452	BOLT M 8X 45 PLATED	1	1						
7	1	26107-080652	BOLT, M8X 65 PLATED	1	1						
8	1	26367-080002	NUT, M8	8	8						
9	1	1A1860-20440	COVER L COMPL				1				
10	1	1A1860-20450	COVER R COMPL				1				

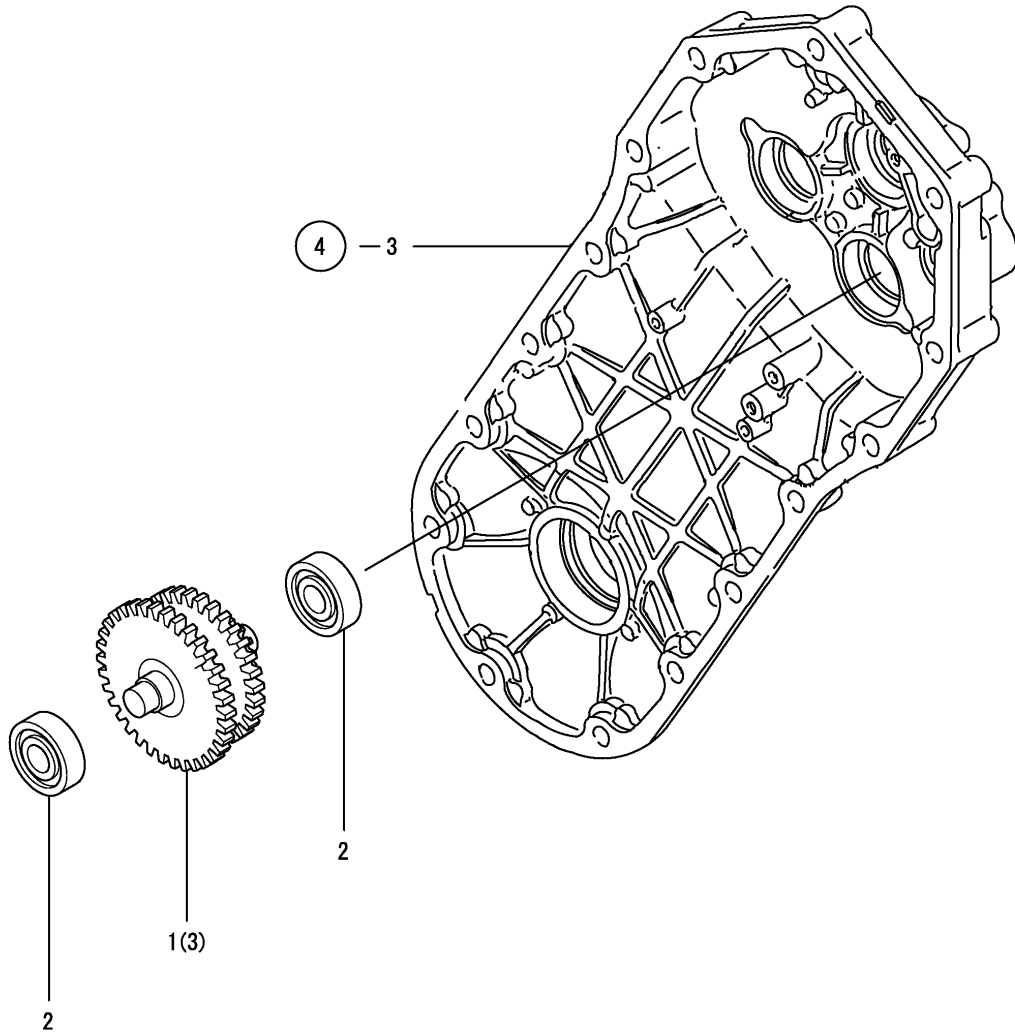
Fig.5. MAIN SHAFT



No.	Lev.	Parts No.	Description	Q'ty						I	R	
				(A)	(B)	(C)	(D)	(E)	(F)			
1	1	1A2190-23010		1	1							1
2	1	1A2550-23010	GEAR 13X24	1	1							1
3	1	24101-060024	BEARING, BALL 6002	2	2							
4	1	24421-152507	SEAL, OIL TC152507	1	1							
5	1	1A2491-23000	SHAFT,MAIN	1	1							
6	1	1A2551-23010	GEAR 13X24	1	1							

Remarks
 (I)TE35J,35DJ

Fig.6. COUNTER SHAFT



(A)=TE35
(B)=TE35D
(C)=

(D)=
(E)=
(F)=

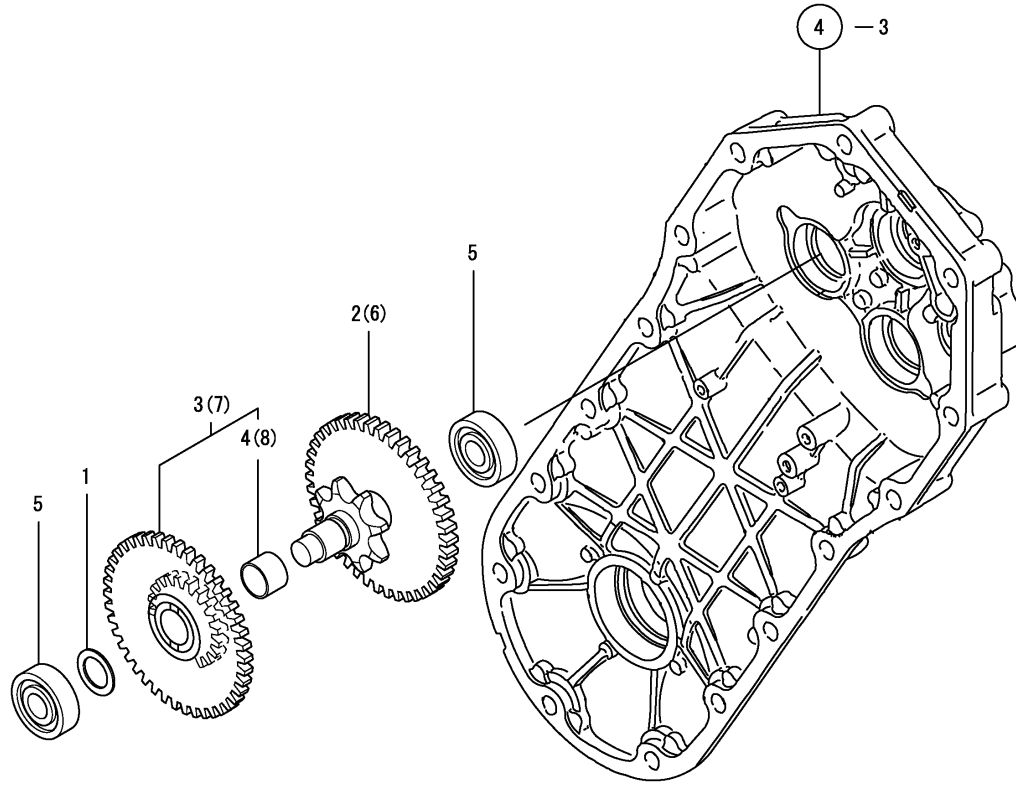
No.	Lev.	Parts No.	Description	Q'ty						I	R
				(A)	(B)	(C)	(D)	(E)	(F)		
1	1	1A2550-23100	SHAFT CMP,COUNTER	1	1						1
2	1	24101-062014	BEARING, BALL 6201	2	2						
3	1	1A2551-23100	SHAFT CMP,COUNTER	1	1						

Remarks

(1)TE35J,35DJ

N:Old Yes No → New, Q:Old No Yes → New, R:Old Yes No → New, S:Old No Yes → New, W:Add, Z:Discontinued, F:Interchangeable by set, K:Q'ty Change

Fig.7. SPEED REDUCTION SHAFT



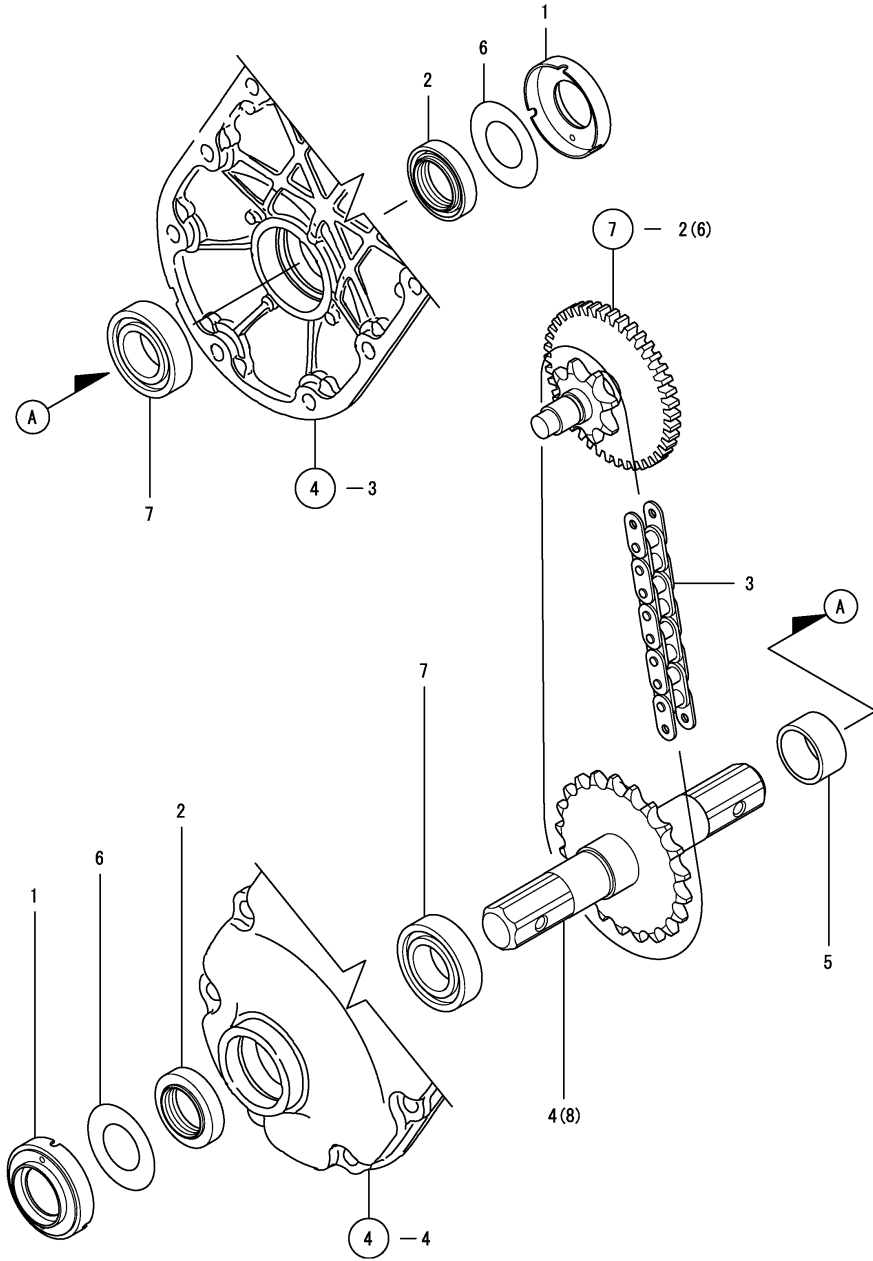
(A)=TE35
 (B)=TE35D
 (C)=

(D)=
 (E)=
 (F)=

No.	Lev.	Parts No.	Description	Q'ty						I	R
				(A)	(B)	(C)	(D)	(E)	(F)		
1	1	1A1860-20280	SHIM 15.22.1.0	2	2						
2	1	1A2550-23400	SHAFT CMP,FINAL	1	1						1
3	1	1A2550-23430	GEAR 20X42	1	1						1
4	2	24550-015120	BUSH, 15X12	1	1						1
5	1	24101-062014	BEARING, BALL 6201	2	2						
6	1	1A2551-23400	SHAFT CMP,FINAL	1	1						
7	1	1A2551-23430	GEAR 20X42	1	1						
8	2	24550-015120	BUSH, 15X12	1	1						

Remarks
 (1)TE35J,35DJ

Fig.8. AXLE



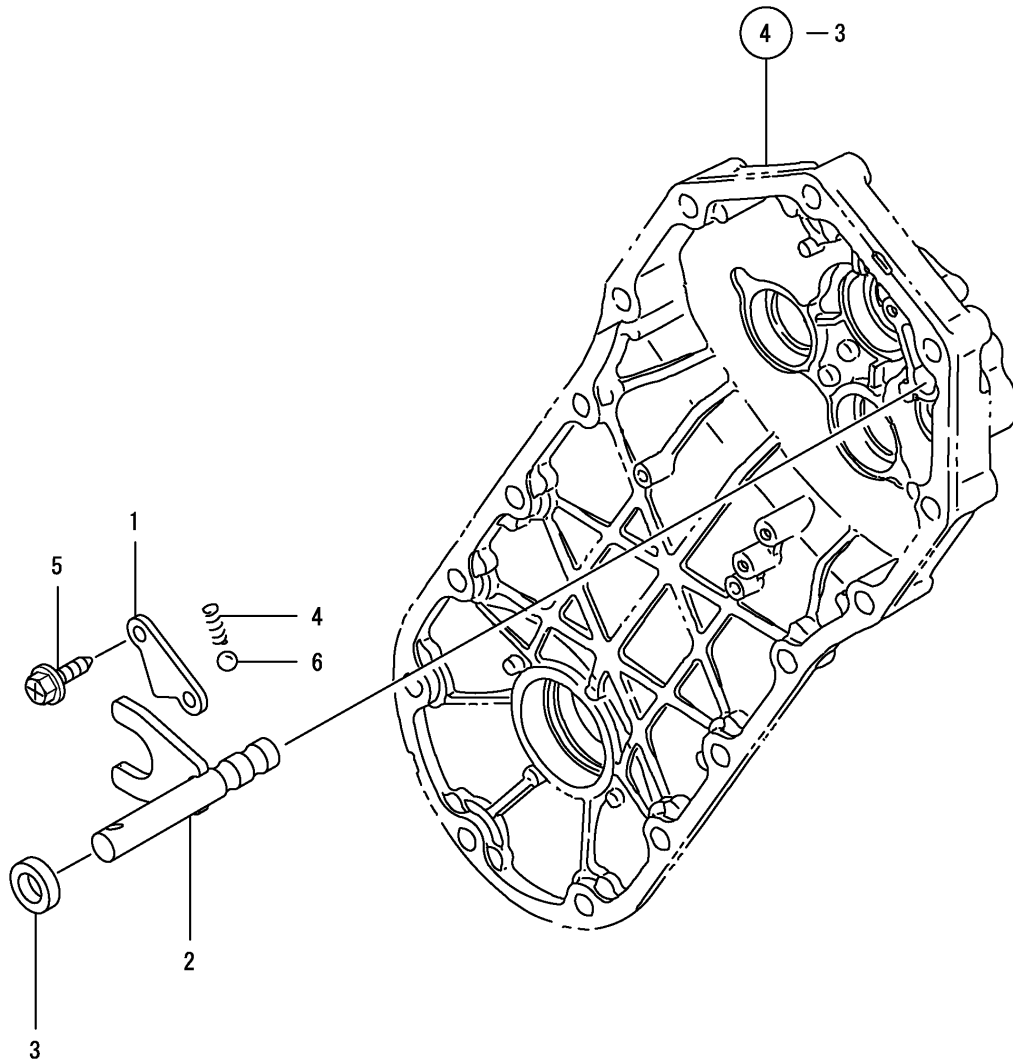
(A)=TE35
 (B)=TE35D
 (C)=

(D)=
 (E)=
 (F)=

No.	Lev.	Parts No.	Description	Q'ty						I	R
				(A)	(B)	(C)	(D)	(E)	(F)		
1	1	1A2550-20400	COVER, AXLE BOSS	2							
2	1	1A1860-20491	OIL SEAL 25.40	2	2						
3	1	1A2550-23470	CHAIN 12.7X56, ROLLER	1	1						
4	1	1A2550-24000	AXLE CMP	1	1						1
5	1	1A2550-24050	COLLAR 27X32X16.4	1	1						
6	1	1A2550-24100	WASHER	2	2						
7	1	24101-060054	BEARING, BALL 6005	2	2						
8	1	1A2551-24000	AXLE CMP	1	1						

Remarks
 (1)TE35J,35DJ

Fig.9. CHANGE

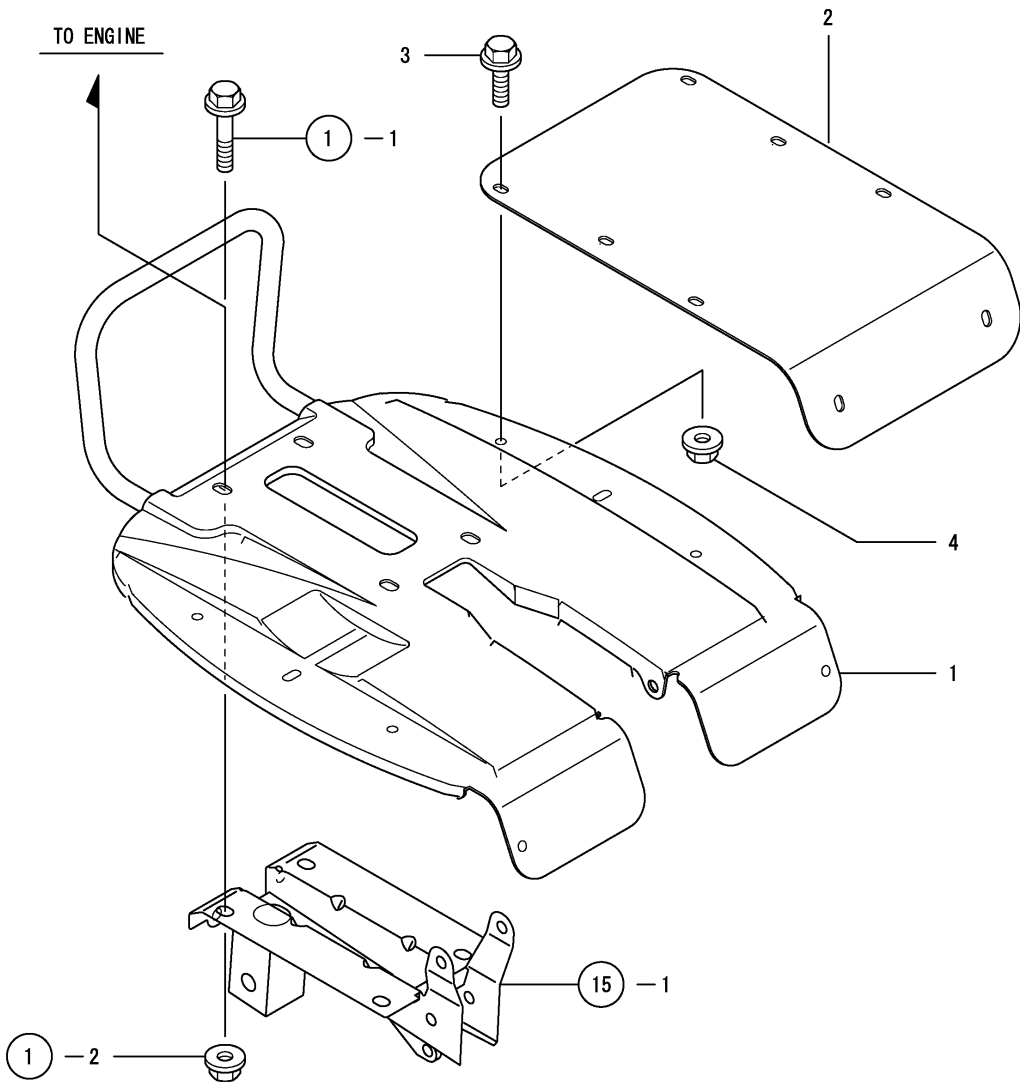


(A)=TE35
(B)=TE35D
(C)=

(D)=
(E)=
(F)=

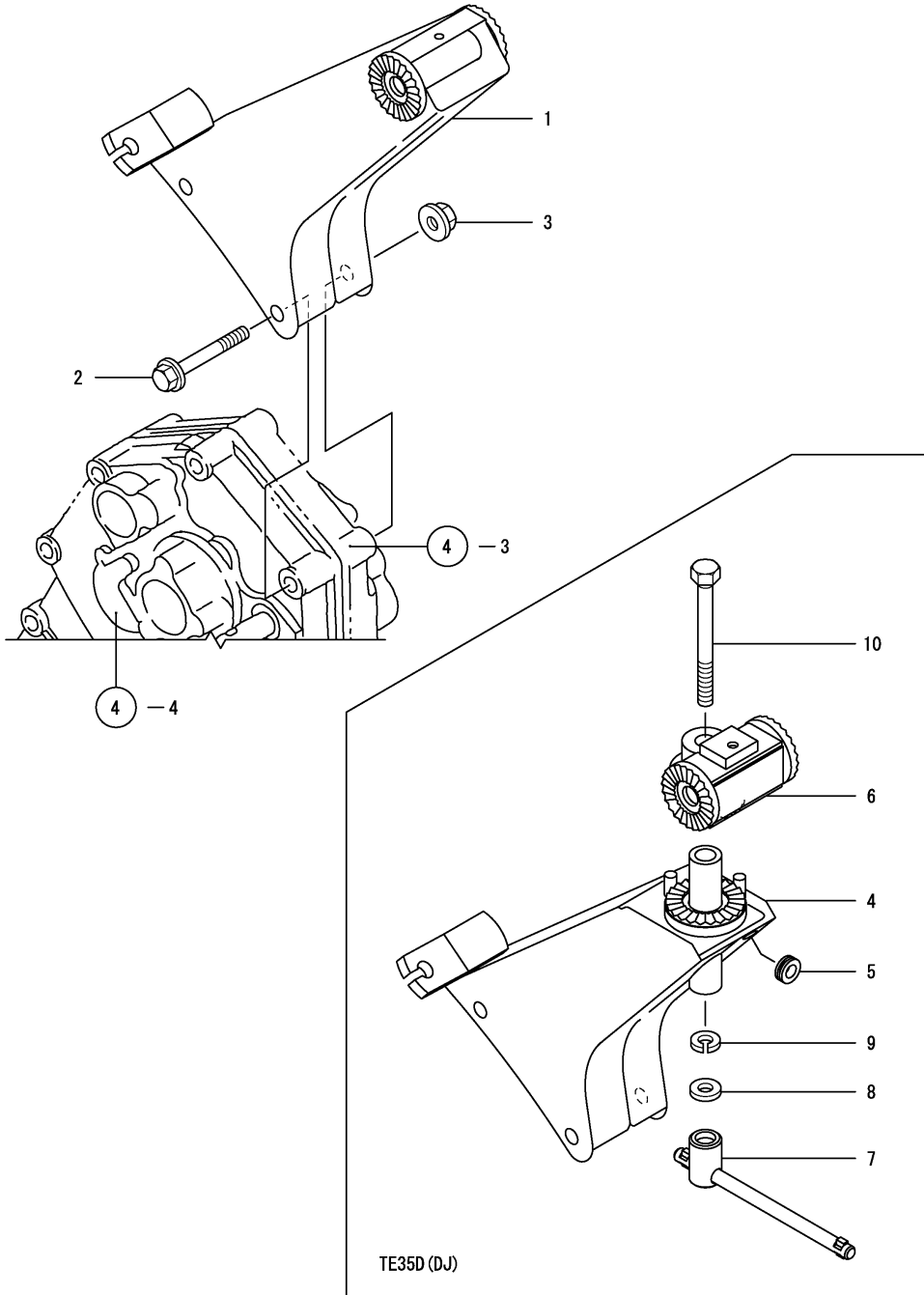
No.	Lev.	Parts No.	Description	Q'ty						I	R
				(A)	(B)	(C)	(D)	(E)	(F)		
1	1	1A1750-21350	KEEP PLATE,BALL	1	1						
2	1	1A2550-27000	FORK CMP,CHANGE	1	1						
3	1	1A1104-28230	OIL SEAL 12184	1	1						
4	1	1E6150-56040	SPRING, FORK	1	1						
5	1	1A1750-90200	SCREW 6X12,COLLAR HD	2	2						
6	1	24190-100001	BALL, STEEL 5/16	1	1						

Fig.10. FENDER



No.	Lev.	Parts No.	Description	Q'ty						I	R
				(A)	(B)	(C)	(D)	(E)	(F)		
1	1	1A2550-32000	FENDER CMP	1	1						
2	1	1A2550-32100	FENDER,EXTENSION	2	2						
3	1	26107-060102	BOLT M 6X 10 PLATED	8	8						
4	1	26367-060002	NUT, M6	8	8						

Fig.11. HANDLE COLUMN

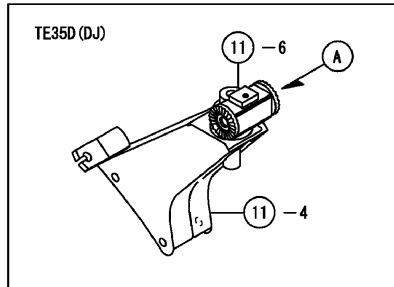
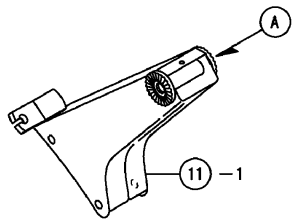
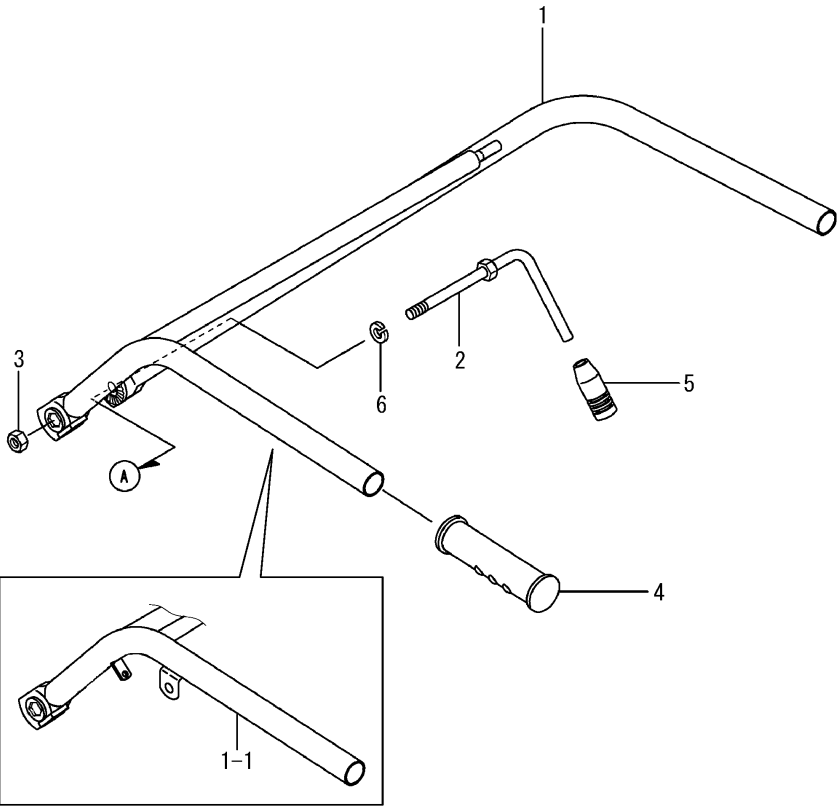


(A)=TE35
(B)=TE35D
(C)=

(D)=
(E)=
(F)=

No.	Lev.	Parts No.	Description	Q'ty						I	R
				(A)	(B)	(C)	(D)	(E)	(F)		
1	1	1A2490-51000	FRAME COMP., HANDLE	1							
2	1	26107-080602	BOLT M 8X 60 PLATED	2	2						
3	1	26367-080002	NUT, M8	2	2						
4	1	1A2490-51200	FRAME COMP., HANDLE		1						
5	1	1A2490-51250	GROMMET		1						
6	1	1A2490-51300	STAY		1						
7	1	1A2550-51700	LEVER ASSY		1						
8	1	22117-100000	WASHER, 10		1						
9	1	22217-100000	WASHER, SPRING 10		1						
10	1	26157-101002	BOLT, M10X100 PLATED		1						

Fig.12. HANDLE

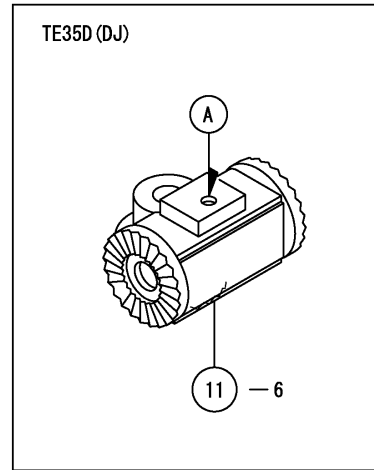
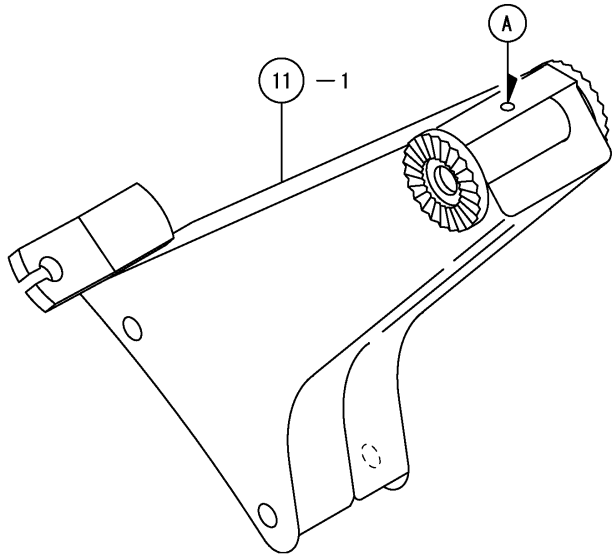
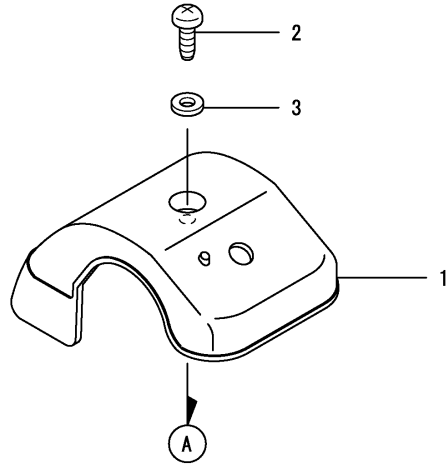


(A)=TE35
(B)=TE35D
(C)=

(D)=
(E)=
(F)=

No.	Lev.	Parts No.	Description	Q'ty						I	R
				(A)	(B)	(C)	(D)	(E)	(F)		
1	1	1A2550-51600	HANDLE CMP	1	1						
1-1	1	1A2550-51800	HANDLE CMP	1	1						S
		(A=F001212) (B=F001212)									
2	1	1A2490-51800	LEVER, LOCK	1	1						
3	1	1A2490-51850	NUT,M10	1	1						
4	1	192040-56220	GRIP,HANDLE	2	2						
5	1	1E6570-65750	GRIP,CONT.LEVER BLK.	1	1						
5-1	1	1E6570-65751	GRIP, LEVER	1	1						R
		(A=FXXXXX) (B=FXXXXX)									
6	1	22287-100000	WASHER, 10	1	1						

Fig.13. HANDLE COVER

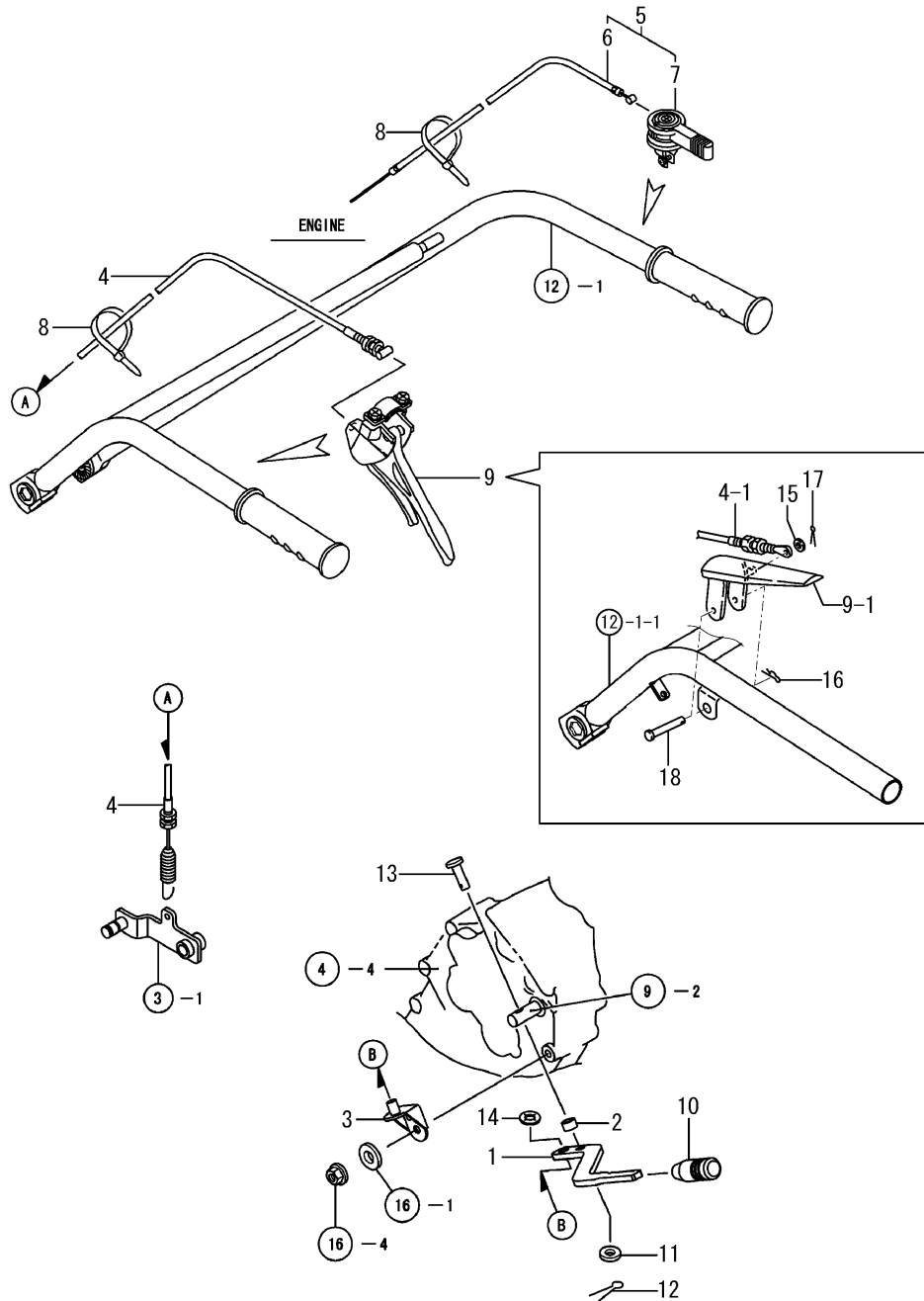


(A)=TE35
(B)=TE35D
(C)=

(D)=
(E)=
(F)=

No.	Lev.	Parts No.	Description	Q'ty						I	R
				(A)	(B)	(C)	(D)	(E)	(F)		
1	1	1A2490-51400	COVER,HANDLE FRAME	1	1						
2	1	1A1750-90060	SCREW 5X16,TAPPING	1	1						
3	1	1A1750-90150	WASHER 5,PLAIN	1	1						

Fig.14. CONTROL LEVER



(A)=TE35
(B)=TE35D
(C)=

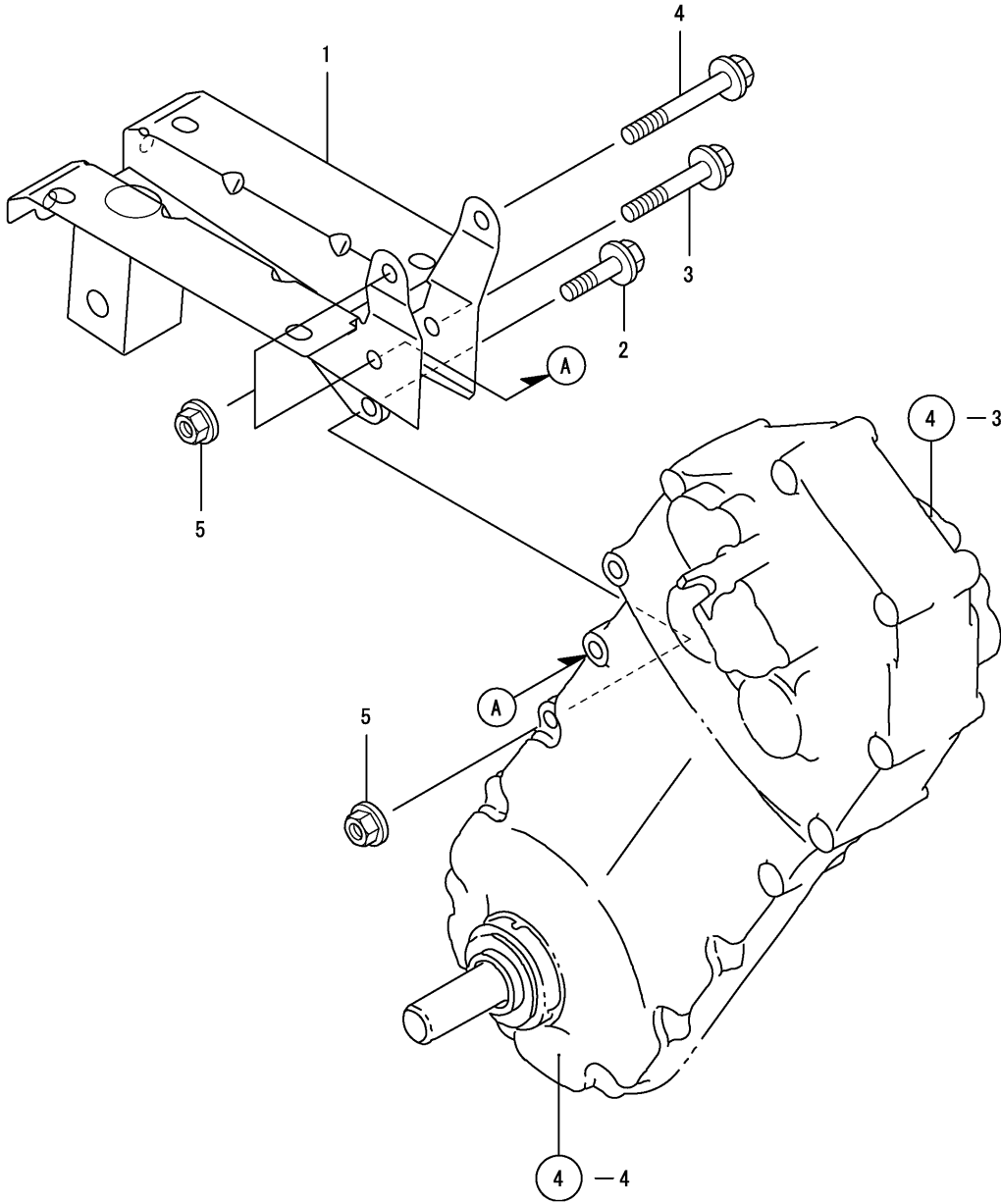
(D)=
(E)=
(F)=

No.	Lev.	Parts No.	Description	Q'ty						I	R
				(A)	(B)	(C)	(D)	(E)	(F)		
1	1	1A2550-55101	LEVER,CHANGE	1	1						
2	1	1S6230-61670	COLLAR, CLUTCH	1	1						
3	1	1A1750-51150	FULCRUM COMP.,CHANGE	1	1						
4	1	1A2550-55520	WIRE CMP,MAIN CLUTCH	1	1						
4-1	1	1A2550-55600	WIRE CMP,MAIN CLUTCH	1	1						S
		(A=F001212) (B=F001212)									
5	1	1A2550-55550	LEVER CMP,ACCELERATO	1	1						
6	2	1A2550-55560	WIRE,ACCELERATOR	1	1						
7	2	1A2191-55581	LEVER,ACCELERATOR	1	1						
8	1	1A2320-55600	BAND, CABLE	2	2						
9	1	1A2132-55610	LEVER E,CLUTCH	1	1						
9-1	1	1A2009-55400	LEVER COMP.,DEADMAN	1	1						S
		(A=F001212) (B=F001212)									
10	1	1E6570-65750	GRIP,CONT.LEVER BLK.	1	1						
10-1	1	1E6570-65751	GRIP, LEVER	1	1						R
		(A=FXXXXX) (B=FXXXXX)									
11	1	22137-060000	WASHER, 6	1	1						
12	1	22417-160120	PIN, COTTER 1.6X12	1	1						
13	1	22487-060260	PIN, H 6X 26	1	1						
14	1	26892-001000	NUT, 10	1	1						
15	1	22137-060000	WASHER, 6	1	1						W
		(A=F001212) (B=F001212)									
16	1	22372-080000	PIN, SNAP 8	1	1						W
		(A=F001212) (B=F001212)									
17	1	22417-200100	COTTER PIN 2.0X10	1	1						W
		(A=F001212) (B=F001212)									
18	1	22486-080400	PIN, H 8X 40	1	1						W
		(A=F001212) (B=F001212)									

Fig.15. ENGINE FRAME

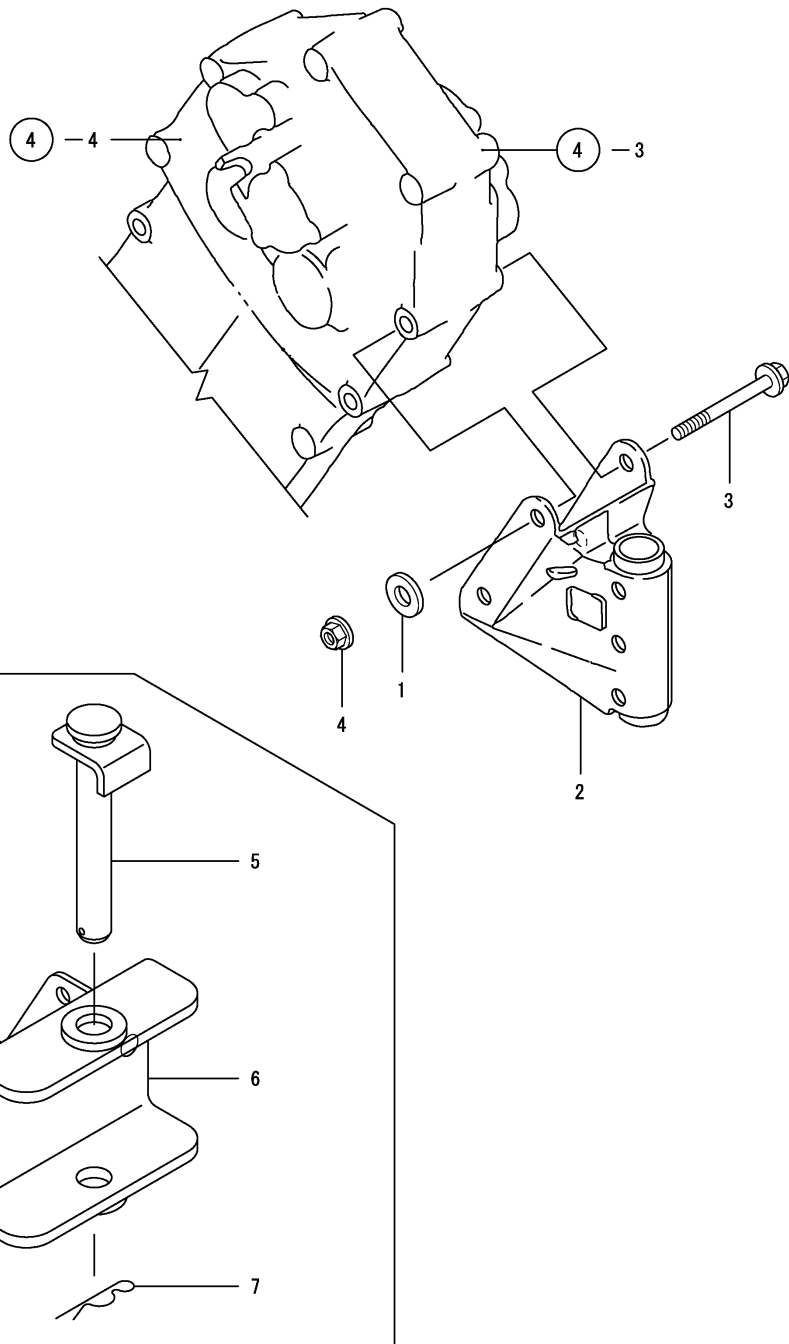
(A)=TE35
(B)=TE35D
(C)=

(D)=
(E)=
(F)=



No.	Lev.	Parts No.	Description	Q'ty						I	R
				(A)	(B)	(C)	(D)	(E)	(F)		
1	1	1A2550-61101	FRAME CMP,ENGINE	1	1						
2	1	26107-080302	BOLT M 8X 30 PLATED	1	1						
3	1	26107-080502	BOLT M 8X 50 PLATED	1	1						
4	1	26107-080702	BOLT M 8X 70 PLATED	1	1						
5	1	26367-080002	NUT, M8	3	3						

Fig.16. HITCH

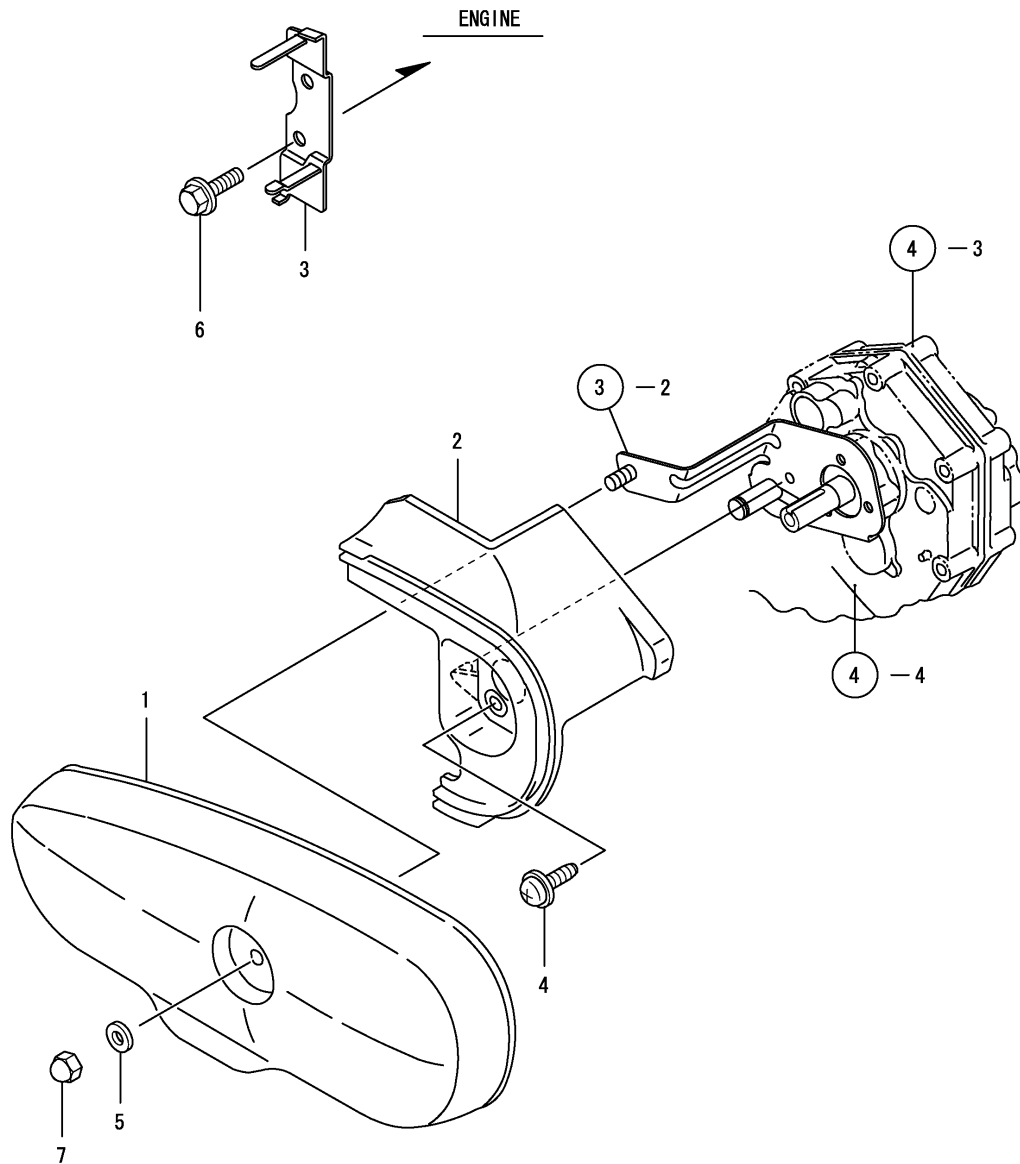


(A)=TE35
(B)=TE35D
(C)=

(D)=
(E)=
(F)=

No.	Lev.	Parts No.	Description	Q'ty						I	R
				(A)	(B)	(C)	(D)	(E)	(F)		
1	1	1D1140-11420	WASHER,PULLEY	1	1						
2	1	1A1750-60500	HITCH COMP	1							
3	1	26107-080752	BOLT M8X75 PLATED	2	2						
4	1	26367-080002	NUT, M8	2	2						
5	1	1A2550-61200	PIN CMP,HITCH		1						
6	1	1A2550-61400	HITCH CMP		1						
7	1	22360-160000	PIN, SNAP 16		1						
7-1	1	1A2860-61450 (B=FXXXXX)	SNAP PIN 16		1						N

Fig.17. BELT COVER

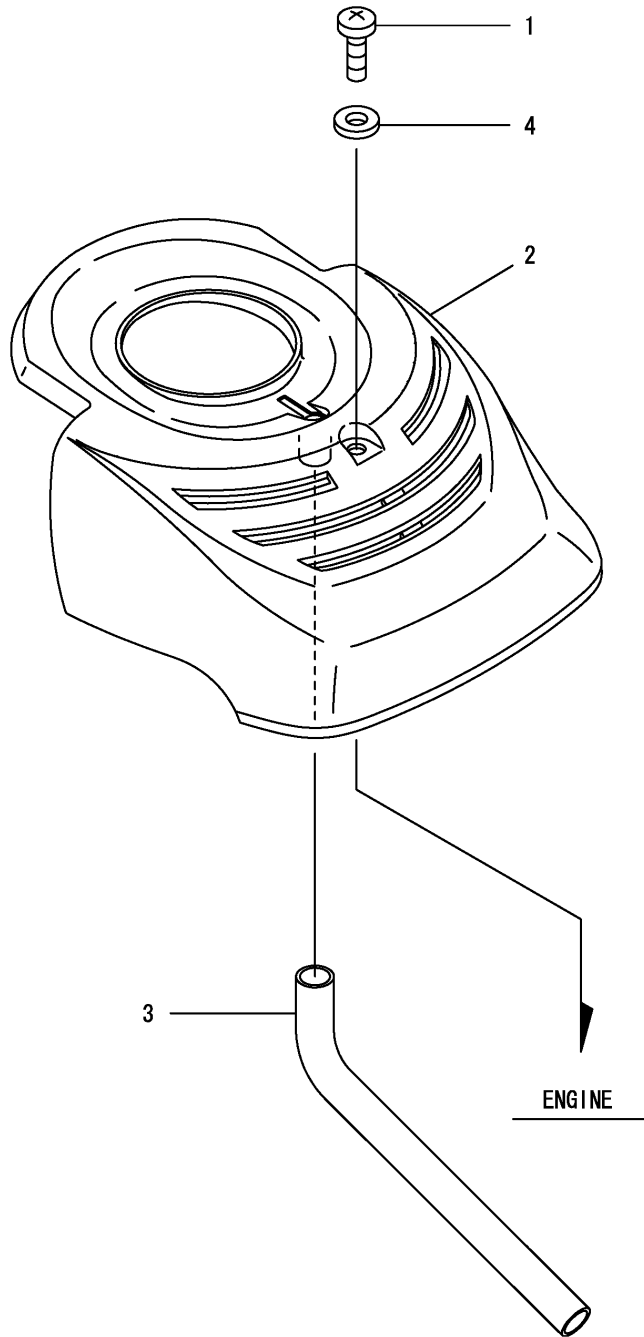


(A)=TE35
(B)=TE35D
(C)=

(D)=
(E)=
(F)=

No.	Lev.	Parts No.	Description	Q'ty						I	R
				(A)	(B)	(C)	(D)	(E)	(F)		
1	1	1A2190-62000	BELT COVER	1	1						
2	1	1A2190-62300	COVER, FLYWHEEL	1	1						
3	1	1A2550-62450	RETAINER CMP,BELT TE	1	1						
4	1	1A1750-90200	SCREW 6X12,COLLAR HD	3	3						
5	1	22157-080000	WASHER, 8	1	1						
6	1	26107-080122	BOLT M 8X 12 PLATED	2	2						
7	1	26657-080002	NUT, CAP M8	1	1						

Fig.18. BONNET

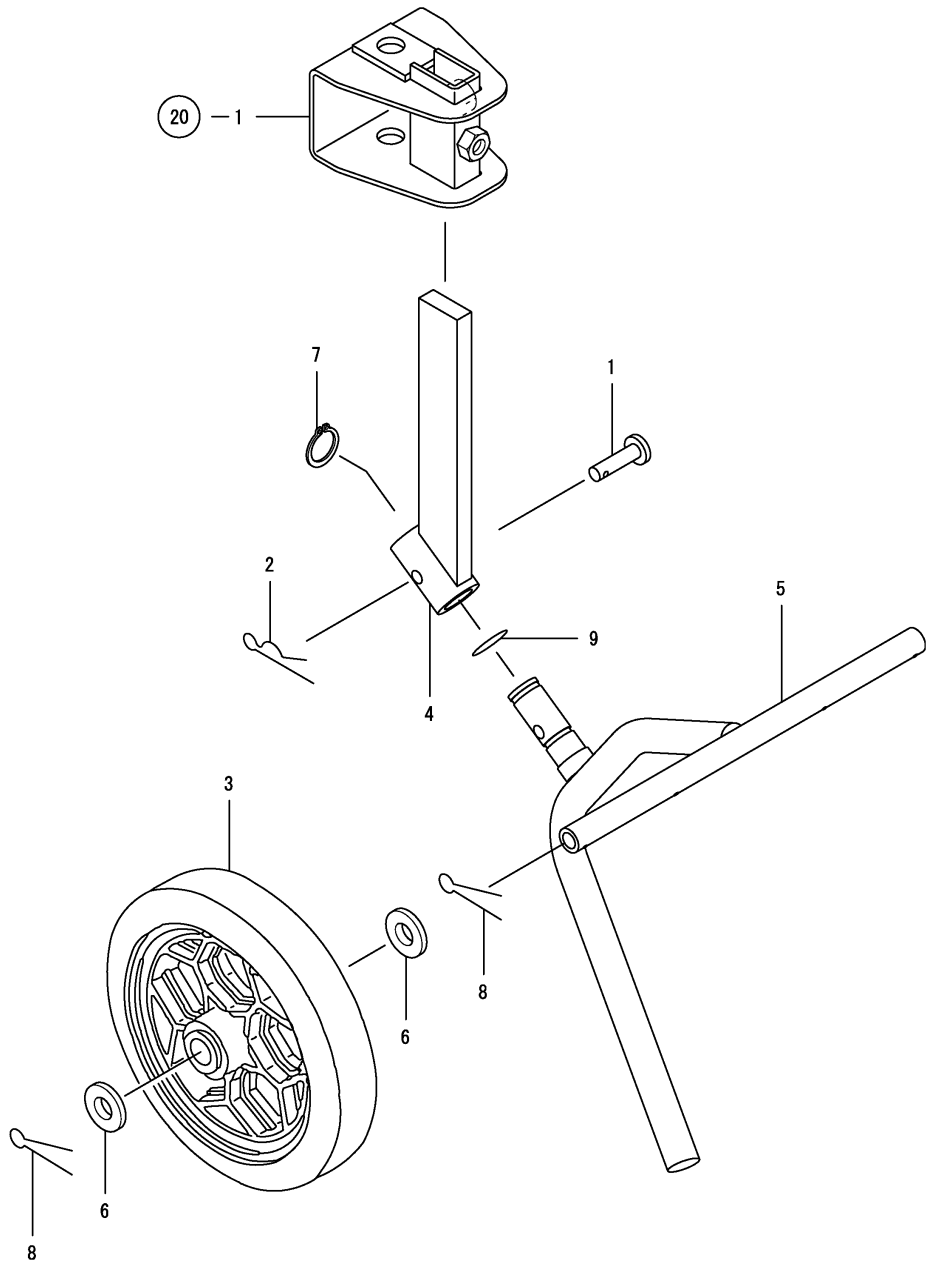


(A)=TE35
(B)=TE35D
(C)=

(D)=
(E)=
(F)=

No.	Lev.	Parts No.	Description	Q'ty						I	R
				(A)	(B)	(C)	(D)	(E)	(F)		
1	1	1A1735-55350 (A=FXXXXX) (B=FXXXXX)	SCREW 6X12,PAN HD.	1	1						Z
1-1	1	1A1686-52230 (A=FXXXXX) (B=FXXXXX)	SCREW, M6X16	1	1						W
2	1	1A2480-64200	REAR COVER	1	1						
3	1	1A2480-64310	BLOWING PIPE	1	1						
4	1	1A1750-90160 (A=FXXXXX) (B=FXXXXX)	WASHER 6, PLAIN	1	1						Z

Fig.19. SKID



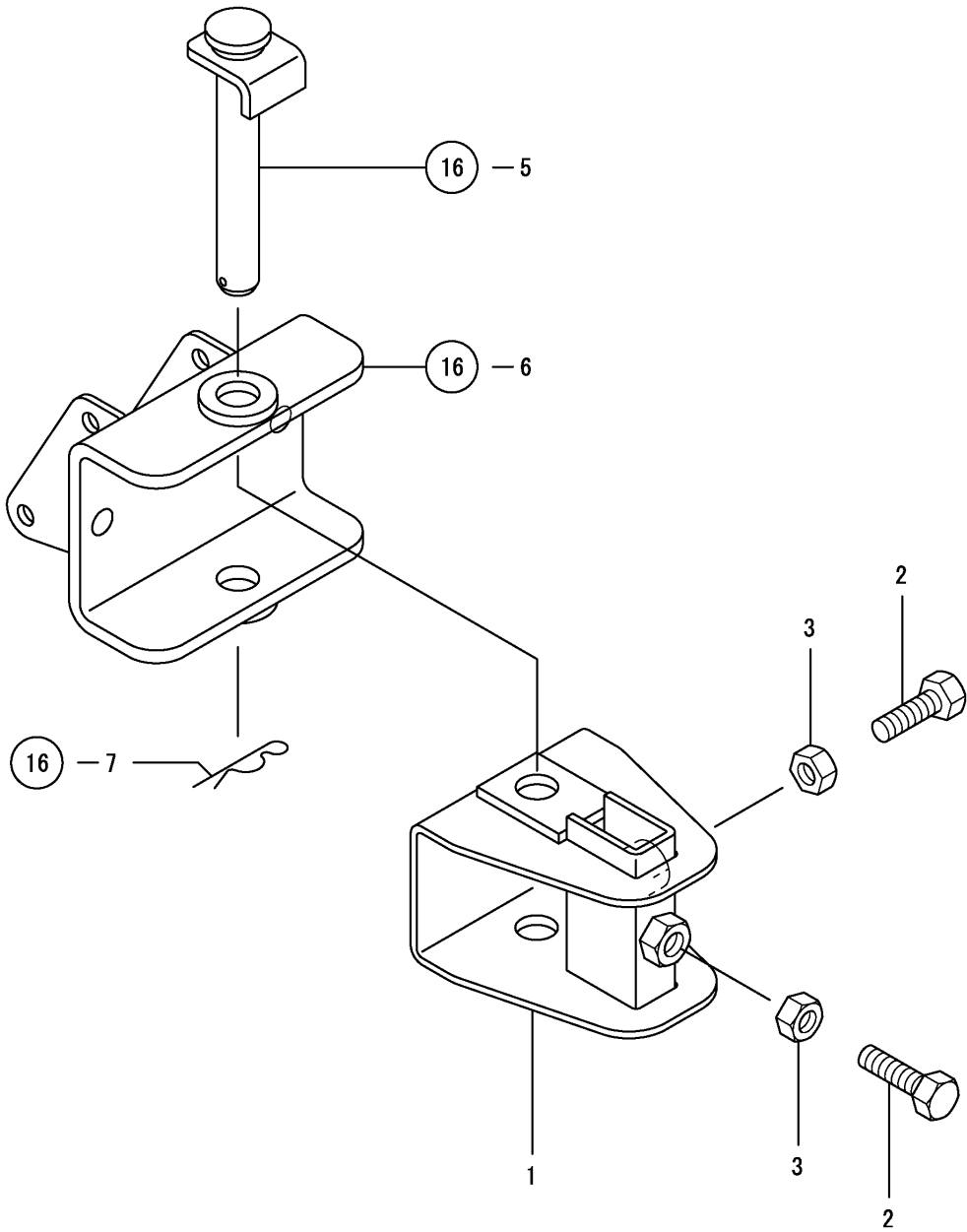
(A)=TE35
(B)=TE35D
(C)=

(D)=
(E)=
(F)=

No.	Lev.	Parts No.	Description	Q'ty						I	R
				(A)	(B)	(C)	(D)	(E)	(F)		
1	1	1A1540-46010	PIN 8X35,FLAT HEAD		1						
2	1	1C6141-47970	PIN, SNAP 8		1						
3	1	1A2170-72200	WHEEL 195,TAIL		2						
4	1	1A2550-75400	BAR,RESIST(UPPER CMP		1						
5	1	1A2550-75450	BAR,RESIST(LOWER CMP		1						
6	1	22137-160000	WASHER, 16		4						
7	1	22242-000200	RING, 20		1						
8	1	22417-300300	PIN, COTTER 3.0X30		4						
9	1	24341-000180	O-RING, 1AS18.0		1						

Remarks
*TE35DCH SET

Fig.20. UNIVERSAL HITCH



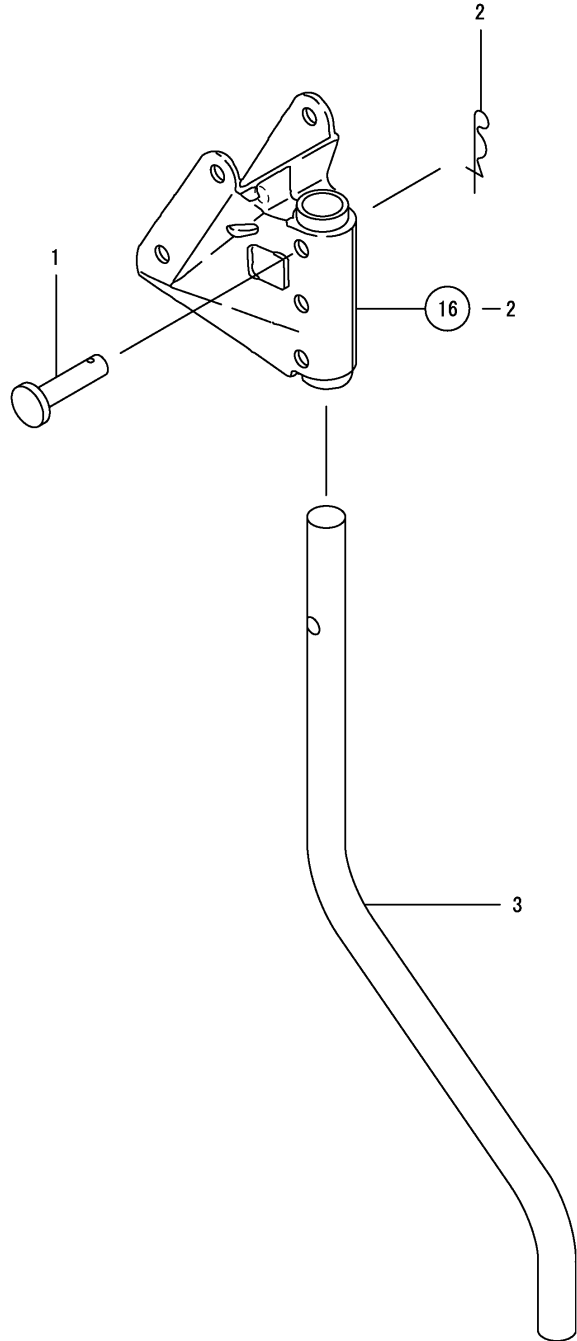
(A)=TE35
(B)=TE35D
(C)=

(D)=
(E)=
(F)=

No.	Lev.	Parts No.	Description	Q'ty						I	R	
				(A)	(B)	(C)	(D)	(E)	(F)			
1	1	1A2132-75500	HITCH CMP.,UNIVERSAL		1							
2	1	26117-100302	BOLT M10X 30		2							
3	1	26717-100002	NUT, M10		2							

Remarks
*TE35DCH SET

Fig.21. SKID

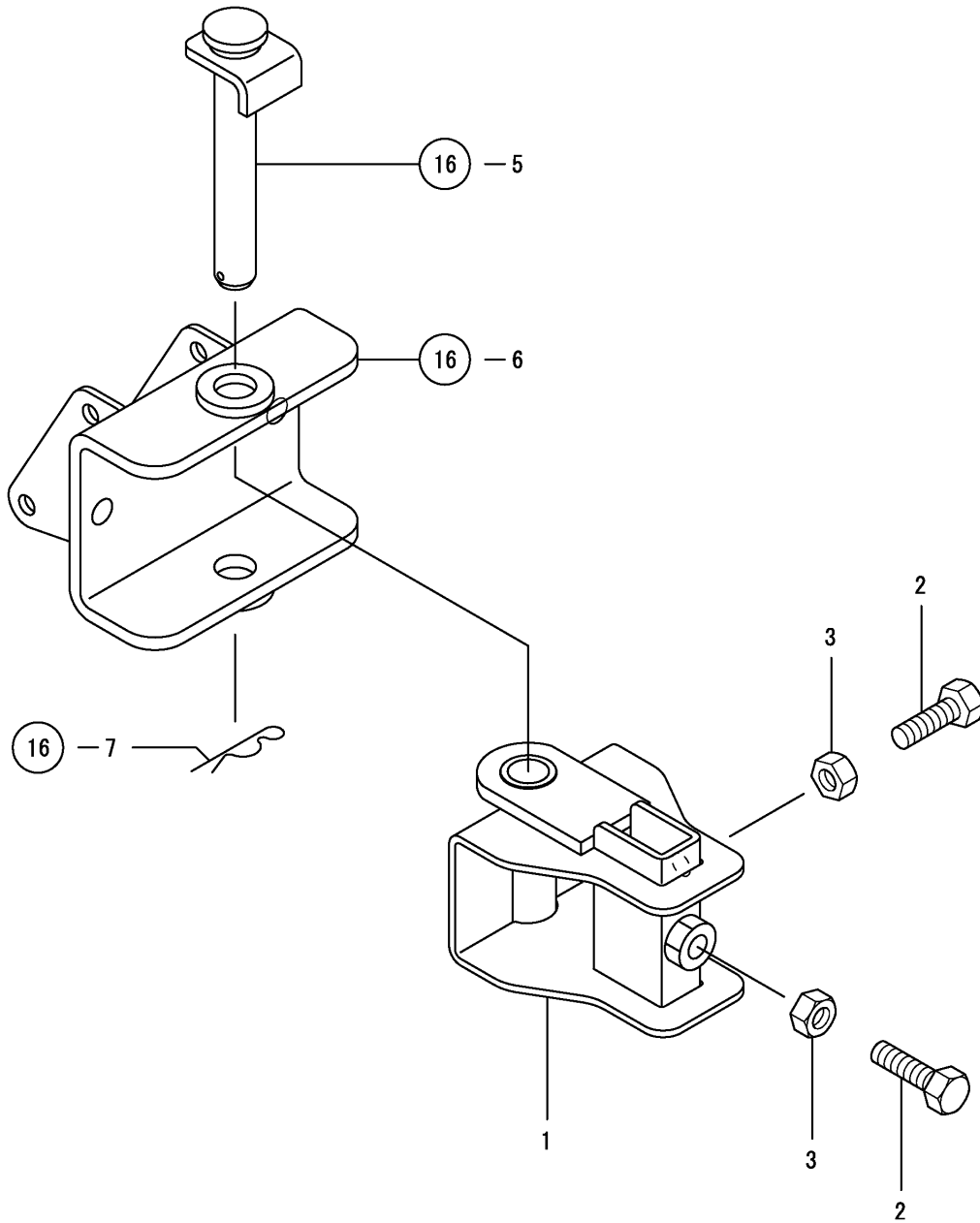


(A)=TE35
(B)=TE35D
(C)=

(D)=
(E)=
(F)=

No.	Lev.	Parts No.	Description	Q'ty						I	R
				(A)	(B)	(C)	(D)	(E)	(F)		
1	1	1A1540-46010	PIN 8X35,FLAT HEAD	1							
2	1	1C6281-52320	PIN, SNAP 8	1							
3	1	1A2550-70000	BAR, RESISTANCE	1							

Fig.22. UNIVERSAL HITCH

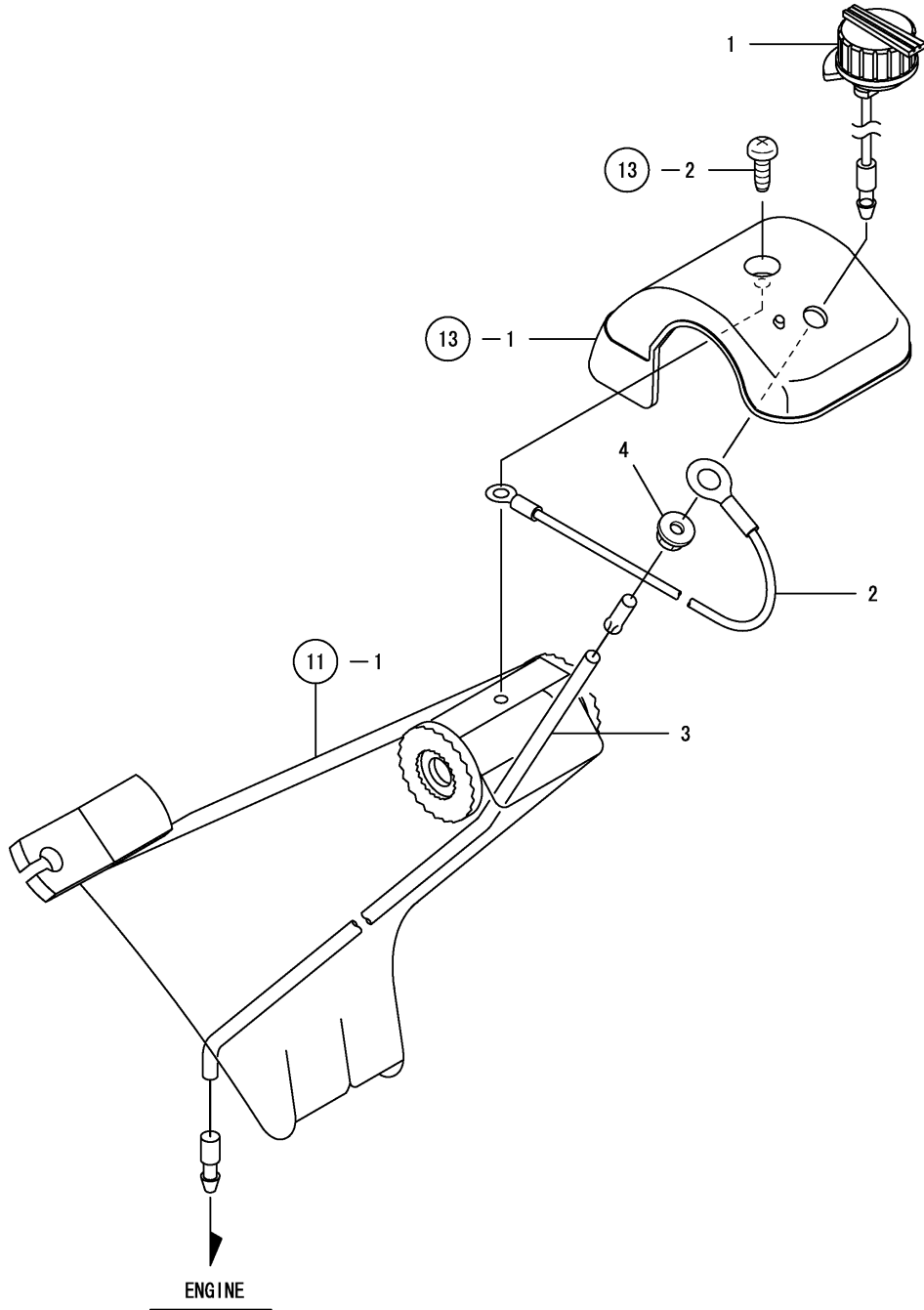


(A)=TE35
(B)=TE35D
(C)=

(D)=
(E)=
(F)=

No.	Lev.	Parts No.	Description	Q'ty						I	R	
				(A)	(B)	(C)	(D)	(E)	(F)			
1	1	1A2550-75501	HITCH CMP,UNIVERSAL		1							
2	1	26117-100302	BOLT M10X 30		2							
3	1	26717-100002	NUT, M10		2							

Fig.23. ELECTRICAL PARTS

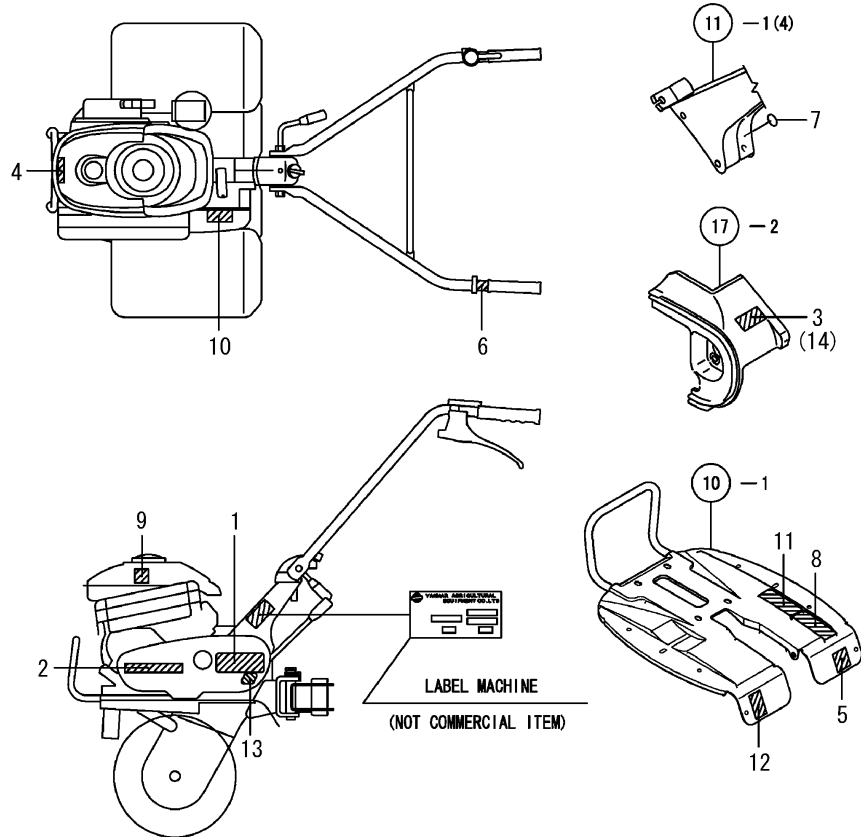
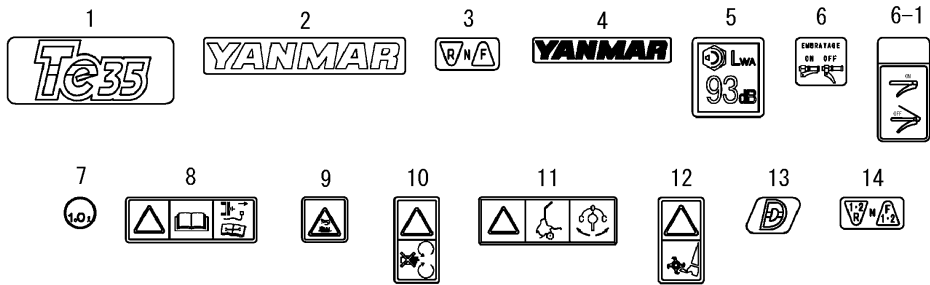


(A)=TE35
(B)=TE35D
(C)=

(D)=
(E)=
(F)=

No.	Lev.	Parts No.	Description	Q'ty						I	R
				(A)	(B)	(C)	(D)	(E)	(F)		
1	1	1A1750-40800	SWITCH,STOP	1	1						
2	1	1A2190-83100	EARTH	1	1						
3	1	1A2490-83100	CORD, STOP SWITCH	1	1						
4	1	26367-080002	NUT, M8	1	1						

Fig.24. LABELS

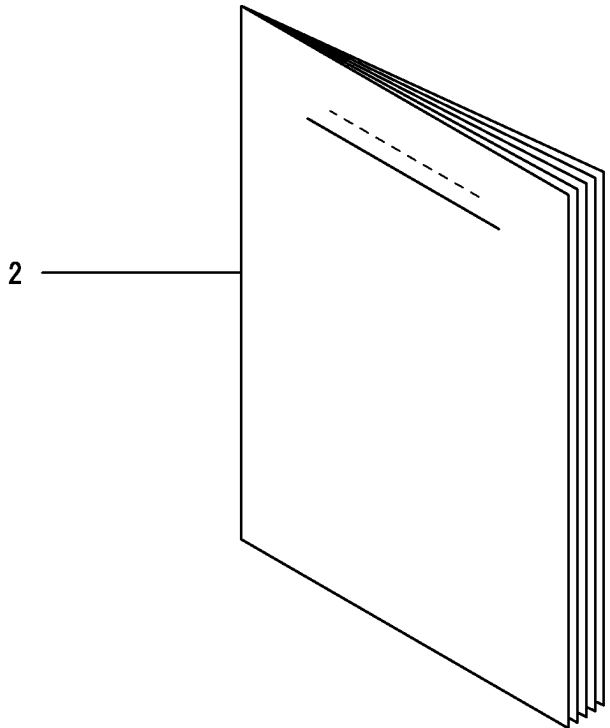
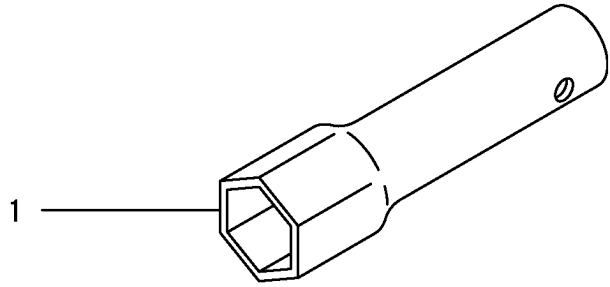


(A)=TE35
(B)=TE35D
(C)=

(D)=
(E)=
(F)=

No.	Lev.	Parts No.	Description	Q'ty						I	R
				(A)	(B)	(C)	(D)	(E)	(F)		
1	1	1A2550-86010	LABEL TE35,MODEL	1	1						
2	1	1A2150-86080	LABEL,FRONT MASK	1	1						
3	1	1A2550-86100	LABEL,CHANGE	1							
4	1	1A2240-86180	LABEL,YANMAR	1	1						
5	1	1A2179-86210	LABEL,YANMAR	1	1						
6	1	1A2099-86340	LABEL,MAIN CLUTCH	1	1						
6-1	1	1A2009-86340	LABEL,MAIN CLUTCH	1	1						S
7	1	1A2138-86701	LABEL 1,OIL	1	1						
8	1	1A2199-86700	MARK,HANDLING CAUTN	1	1						
9	1	1A2199-86720	MARK,HI-TEMP.CAUTION	1	1						
10	1	1A2199-86840	MARK,BELT CVR.CAUTION	1	1						
11	1	1A2191-86900	MARK,COCK CAUTION	1	1						
12	1	1A2199-86900	MARK,ROTARY CAUTION	1	1						
13	1	1A2550-86020	LABEL(D			1					
14	1	1A2550-86110	LABEL,CHANGE			1					

Fig.25. TOOLS & ACCESSORIES

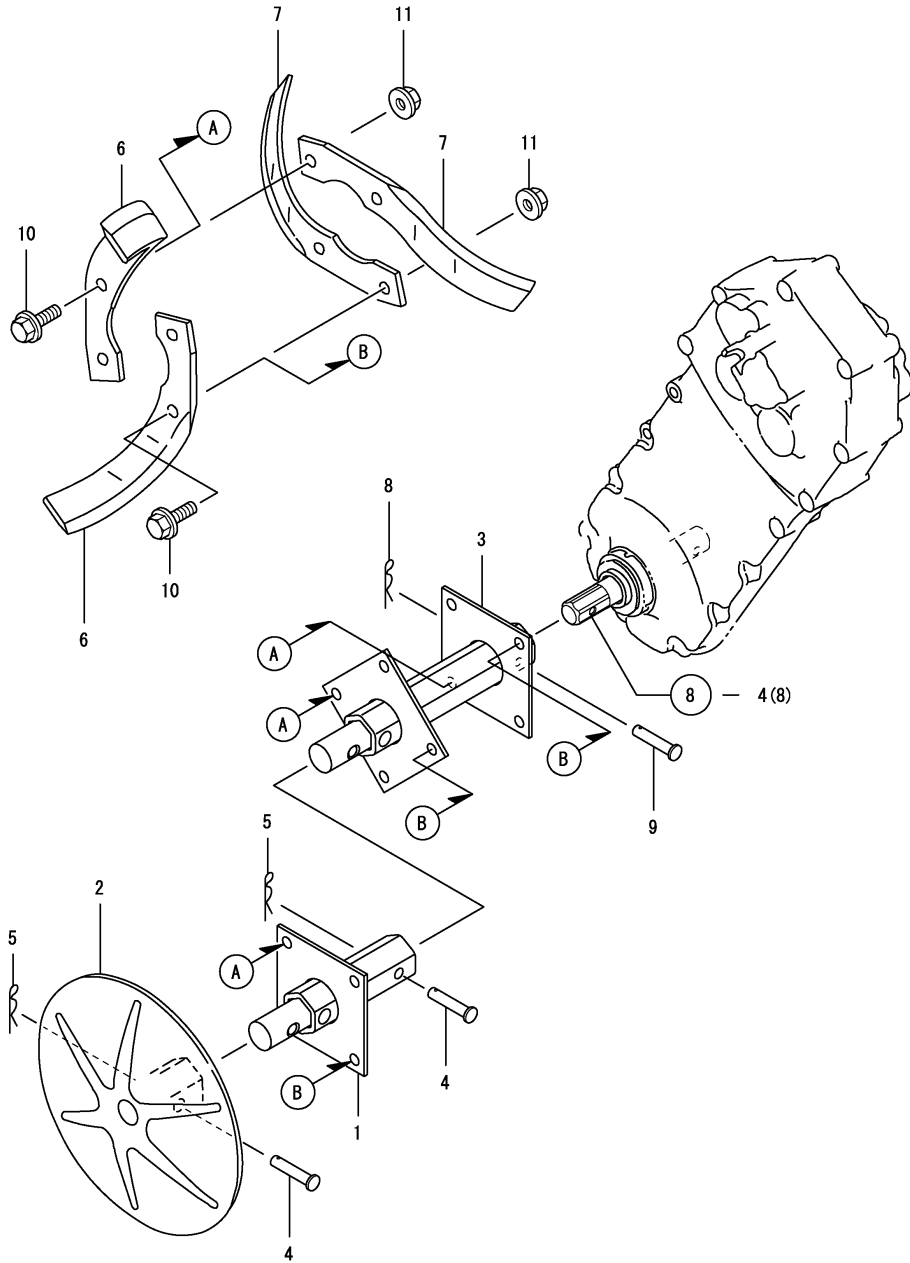


(A)=TE35
(B)=TE35D
(C)=

(D)=
(E)=
(F)=

No.	Lev.	Parts No.	Description	Q'ty						I	R
				(A)	(B)	(C)	(D)	(E)	(F)		
1	1	160110-92700	WRENCH, 21 L140	1	1						
2	1	1A2550-88000	MANUAL,OPERATION	1	1						

Fig.26. AXLE ROTOR



(A)=TE35
(B)=TE35D
(C)=

(D)=
(E)=
(F)=

No.	Lev.	Parts No.	Description	Q'ty						I	R
				(A)	(B)	(C)	(D)	(E)	(F)		
1	1	1S0090-11050	SHAFT COMPL.,EXTENS		2						
2	1	1S0090-11070	DISK COMP		2						
3	1	1S0090-11090	SHAFT COMPL.,ROTOR		2						
4	1	1A1540-46010	PIN 8X35,FLAT HEAD		4						
5	1	1A1540-46020	PIN 8,SNAP		4						
6	1	1A1402-91180	TAIN L ROTOR		12						
6-1	1	1A1402-91181	ROTOR TINE L (B=FXXXXXX)		12						N
7	1	1A1402-91190	TAIN R ROTOR		12						
7-1	1	1A1402-91191	ROTOR TINE R (B=FXXXXXX)		12						N
8	1	22372-060000	PIN, SNAP 6		2						
9	1	22486-060400	PIN, H 6X 40		2						
10	1	26107-080202	BOLT M 8X 20 PLATED		24						
11	1	26367-080002	NUT, M8		24						

Remarks
*TE35DCH SET

Parts No. Index

Parts No.	Fig. No.	Ref. No.
160110-92700	25	1
192040-56220	12	4
1A1104-28230	9	3
1A1402-91180	26	6
1A1402-91181	26	6 -1
1A1402-91190	26	7
1A1402-91191	26	7 -1
1A1470-20090	4	1
1A1540-46010	19	1
	21	1
	26	4
1A1540-46020	26	5
1A1686-52230	18	1 -1
1A1735-55350	18	1
1A1750-20410	4	2
1A1750-21350	9	1
1A1750-40800	23	1
1A1750-51150	14	3
1A1750-60500	16	2
1A1750-90060	13	2
1A1750-90150	13	3
1A1750-90160	18	4
1A1750-90200	9	5
	17	4
1A1860-20280	7	1
1A1860-20440	4	9
1A1860-20450	4	10
1A1860-20491	8	2
1A2009-55400	14	9 -1
1A2009-86340	24	6 -1
1A2099-86340	24	6
1A2132-55610	14	9
1A2132-75500	20	1
1A2138-86701	24	7
1A2150-86080	24	2
1A2170-72200	19	3
1A2179-86210	24	5
1A2190-21010	4	3
1A2190-21020	4	4
1A2190-23010	5	1
1A2190-62000	17	1
1A2190-62300	17	2
1A2190-83100	23	2
1A2191-55581	14	7
1A2191-86900	24	11
1A2199-86700	24	8
1A2199-86720	24	9
1A2199-86840	24	10
1A2199-86900	24	12
1A2240-86180	24	4

Parts No.	Fig. No.	Ref. No.
1A2320-55600	14	8
1A2480-64200	18	2
1A2480-64310	18	3
1A2490-13100	3	1
1A2490-13150	3	2
1A2490-13400	3	3
1A2490-51000	11	1
1A2490-51200	11	4
1A2490-51250	11	5
1A2490-51300	11	6
1A2490-51400	13	1
1A2490-51800	12	2
1A2490-51850	12	3
1A2490-83100	23	3
1A2491-23000	5	5
1A2550-12100	2	1
1A2550-12150	2	7
1A2550-12160	2	2
1A2550-13350	2	8
1A2550-13360	2	12
1A2550-13650	3	4
1A2550-20400	8	1
1A2550-23010	5	2
1A2550-23100	6	1
1A2550-23400	7	2
1A2550-23430	7	3
1A2550-23470	8	3
1A2550-24000	8	4
1A2550-24050	8	5
1A2550-24100	8	6
1A2550-27000	9	2
1A2550-32000	10	1
1A2550-32100	10	2
1A2550-51600	12	1
1A2550-51700	11	7
1A2550-51800	12	1 -1
1A2550-55101	14	1
1A2550-55520	14	4
1A2550-55550	14	5
1A2550-55560	14	6
1A2550-55600	14	4 -1
1A2550-61101	15	1
1A2550-61200	16	5
1A2550-61400	16	6
1A2550-62450	17	3
1A2550-70000	21	3
1A2550-75400	19	4
1A2550-75450	19	5
1A2550-75501	22	1
1A2550-86010	24	1

Parts No.	Fig. No.	Ref. No.
1A2550-86020	24	13
1A2550-86100	24	3
1A2550-86110	24	14
1A2550-88000	25	2
1A2551-23010	5	6
1A2551-23100	6	3
1A2551-23400	7	6
1A2551-23430	7	7
1A2551-24000	8	8
1A2860-61450	16	7 -1
1C6141-47970	19	2
1C6281-52320	21	2
1D1140-11420	16	1
1D1630-51050	2	3
		9
1E6150-56040	9	4
1E6570-65750	12	5
	14	10
1E6570-65751	12	5 -1
	14	10 -1
1S0090-11050	26	1
1S0090-11070	26	2
1S0090-11090	26	3
1S6230-61670	14	2
22117-100000	11	8
22137-060000	14	11
		15
22137-160000	19	6
22157-060000	2	4
		10
22157-080000	17	5
22217-060000	2	5
22217-100000	11	9
22242-000120	3	5
22242-000200	19	7
22287-100000	12	6
22360-160000	16	7
22372-060000	26	8
22372-080000	14	16
22417-160120	14	12
22417-200100	14	17
22417-300300	19	8
22486-060400	26	9
22486-080400	14	18
22487-060260	14	13
24101-060024	5	3
24101-060054	8	7
24101-062014	6	2
	7	5
24190-100001	9	6

Parts No.	Fig. No.	Ref. No.
24341-000180	19	9
24421-152507	5	4
24550-015120	7	4
		8
26107-060102	10	3
26107-060122	2	11
26107-080122	17	6
26107-080202	26	10
26107-080252	4	5
26107-080302	15	2
26107-080352	1	1
26107-080452	4	6
26107-080502	15	3
26107-080602	11	2
26107-080652	4	7
26107-080702	15	4
26107-080752	16	3
26117-060162	2	6
26117-100302	20	2
	22	2
26157-101002	11	10
26367-060002	10	4
26367-080002	1	2
	4	8
	11	3
	15	5
	16	4
	23	4
	26	11
26657-080002	17	7
26717-100002	20	3
	22	3
26892-001000	14	14